



WASEM

RED ANGUS

ANNUAL

PRODUCTION SALE

63 BULLS | 70 OPEN COMMERCIAL HEIFERS | 11 BRED HEIFERS

FEBRUARY 16, 2023

2 P.M. MST

WIX SALE BARN
RICHARDTON, ND



Cattlemen, family and friends,

We want to welcome you to our annual production sale and say Thank You for your support over the years. We realized a couple of weeks after the sale was over last year, that it was our 10th production sale, and what sale it was. We have come a long way in 10 years, it is fun to look back and reflect on how much we have learned. We value your trust in our program. We continue to seek out genetics that will help to make your herd more profitable and improve the Red Angus breed as a whole.

2022 brought us lessons in endurance, hope and faith. We made it through the April blizzards tired, but grateful for the much-needed moisture. I think the cows were just as happy to see the green grass at turn out as we were. It is kind of amazing what some green grass and a good hay crop can do for your soul.

We are excited about the offering we have for you this year. PIE Quarterback progeny continue to top production sales across the nation. These genetics are highly sought after and we are excited to have some for you! We have four full brothers to WSM Playmaker, our high selling Quarterback son from last year. We also have our first set of calves out of Quarterback daughters to offer. Seneca should need no introduction. He stamps his progeny with muscle and performance, while making daughters that are moderate framed and productive. We have a few new sires groups this year. Went Yard, Enterprise and Franchise.

We rely on Heather Hilger, with Dakota Land Feeds as our nutritionist, to help us get our cattle into the condition they need to be in. We take your investment very seriously and don't want a product that will fall apart or have to be culled early due to structure. The bulls and females are developed on a high roughage balanced ration that promotes growth and soundness and consists of corn silage, grain corn, alfalfa and grass hay, all of which are grown here. We do add some DDG to the mix to balance our protein and a pelleted mineral supplement containing rumensin is used as well. We start the bulls on and maintain a 48 mgcal up to February and back them off as the weather warms up or genetic potential has been reached. The heifers are fed a 38 mgcal ration throughout their time here.

The registered bred heifers are ones we culled due to calving dates being past our cut off date. They are all bred to Went Yard 0700.

We have open commercial heifers for the offering again this year. Jon and Patty Tebelius, long time customers of ours, have open heifers for the offering as well.

- CHRIS, JOLYN, KACEE AND BRAELYN WASEM

SALE INFORMATION

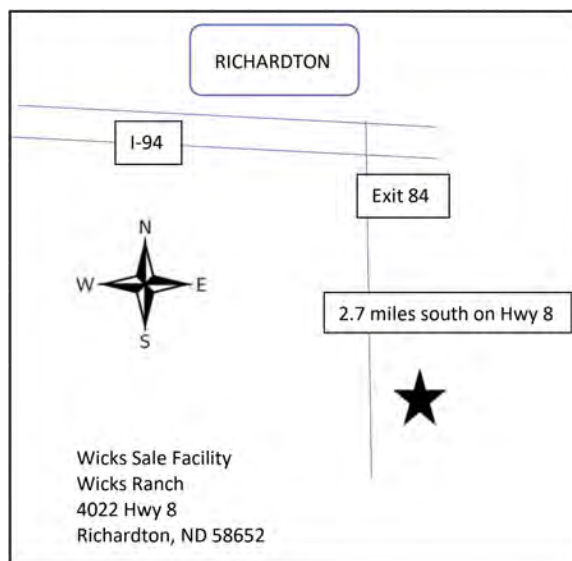


ANNUAL PRODUCTION SALE

FEBRUARY 16, 2023

2 P.M. MST

RICHARDTON, ND



WASEMREDANGUS.COM

 @WASEMREDS

2023 NON-PARENT EPD AVERAGES

PROS	HB	GM	CED	BW	WW	YW	ADG	DMI	M	ME
94	55	39	13	-1.9	60	96	0.22	1.40	25	2
HPG	CEM	STAY	MARB	YG	CW	REA	FAT			
11	7	15	0.43	0.06	23	0.14	0.02			

SALE INFORMATION

CONTACT INFO:

Chris Wasem..... 701-260-1513
Jolyn Wasem 701-290-9634
Jon Tebelius..... 701-341-1916
Patty Tebelius..... 701-260-0095
WIX Sale Facility 701-974-4334

AUCTIONEER:

Scott Weishaar
Weishaar Auction Service701-426-6826

LIVESTOCK REPRESENTATIVES:

Rachael Oliver
Red Angus Association of America 406-480-1569
Scott Bachmeier
Dakota Prairie Outdoors 701-425-6651
Scott Dirk
Tri-State Livestock 605-380-6024
Cheech Holznagel
Flying H Livestock Service 701-400-2900
Will Bollum
Western Ag Reporter 507-244-0833
Karoline Rose
KRose Company 406-285-1907

VIDEOS:

Videos may be viewed at DVAuction.com.
Additional videos, pictures and information on sale lots may also be viewed at:
www.wasemredangus.com; or our Facebook page.

VIEWING CATTLE:

Cattle will be available to be viewed at the ranch anytime prior to the day before sale day. On sale day at WIX Barn.

GENOMIC TESTING:

All Red Angus bulls have been GGP-uLD tested for increased accuracy EPDs and parent verification. IGS EPDs Powered by BOLT.

With the new EPD calculations through the BOLT software, EPDs are updated weekly. The new system provides more accurate genetic selection tools, however there was a shift in the averages of some EPDs, especially CED. With that in mind, please note the breed rankings of each sale bull listed in the line under his EPDs to assist in your bull-buying decisions.

SALE DAY LUNCH:

Lunch will be available sale day from noon to 2 p.m.

SEMEN INTEREST:

We reserve the right to 50% semen interest on all bulls sold. Any semen collected will be done at seller expense and at the buyers convenience.

SUPPLEMENT SHEET:

Will be available sale day and any other pertinent information. Cattle will sell in catalog order unless otherwise noted on sale day

GUARANTEE:

Bulls are guaranteed to breed. A breeding soundness exam will be done prior to delivery. If a bull is proven unable to breed from that exam, buyer will be given a full refund of purchase price, credit in next year's sale, or a replacement bull of equal quality as acceptable to buyer. If a problem arises with a bull, please notify us immediately.

TERMS AND CONDITIONS:

Terms of the sale are cash unless other arrangements have been made. Any announcements made from the block on sale day will take precedence over information in the catalog. The sale will be conducted according to the terms and conditions of the RAAA available at:

redangus.org/marketing/sale-planner/sale-terms-conditions

DELIVERY:

We will deliver up to 300 miles at no charge. If you are farther than 300 miles, we will work with you to make arrangements. We would like to keep the bulls and continue to develop them until they are fertility tested and ready for delivery in April.

Bred and open heifers are the buyer's responsibility to be picked up. We will assist you in any way we can to get the heifers to your place.

ONLINE BIDDING:

The sale will be broadcast online with live bidding available on www.dvauction.com.

Catalog designed by:



KROSE
COMPANY
KROSECOMPANY.COM



A RREDS SENECA 731C

BULL DOB: 3/1/15 REG: 3491307

BIEBER ROOSEVELT W384

BIEBER ROLLIN DEEP Y118

BIEBER TILLY 399W

BECKTON EPIC R397 K

RREDS ASTER 309A

MLK CRK ASTER 175

BIEBER ROUGH RIDER 10712

BIEBER SHEBA 9602

BIEBER BOONE 8000

BIEBER TILLY 303S

BECKTON EPIC K F075

BECKTON KIT F468 JL

MLK CRK CORNERSTONE JC

MLK CRK ASTER 462

PROS	HB	GM	CED	BW	WW	YW	ADG	DMI	M	ME
77	74	3	12	2.5	73	118	0.28	1.96	19	7
68%	19%	94%	65%	38%	17%	18%	22%	85%	92%	68%
HPG	CEM	STAY	MARB	YG	CW	REA	FAT			
12	7	19	0.06	0.20	34	0.32	0.08			
50%	53%	14%	97%	94%	21%	20%	99%			



B WFL MERLIN 018A

BULL DOB: 1/19/13 REG: 1628086

LJC MISSION STATEMENT P27

LJC MERLIN T179

BUF CRK REDPRIDE N179

BROWN COMMITMENT S7206

WFL COMMITMENT 042Y

WFL JEWELMAKER 9024

LJC LANCER 806

LJC HANNAH 106

BECKTON JULIAN GG B571

BUF CRK REDPRIDE 6089

LJC LANCER 806

BROWN MS SHAZZAM P7940

LCB JEWEL MAKER N155

WFL MAJOR LEAGUE 7085

PROS	HB	GM	CED	BW	WW	YW	ADG	DMI	M	ME
80	16	64	16	-4.1	82	130	0.30	1.32	38	2
63%	93%	12%	20%	16%	6%	7%	14%	35%	1%	39%
HPG	CEM	STAY	MARB	YG	CW	REA	FAT			
9	8	8	0.54	-0.21	27	0.68	-0.03			
88%	39%	96%	27%	3%	37%	4%	4%			



C PIE QUARTERBACK 789

BULL DOB: 2/1/17 REG: 3838837

LSF SAGA 1040Y

PIE STOCKMAN 4051

PIE LAKOTA 046

PIE ONE OF A KIND 352

PIE RUBY 520

PIE RUBY 381

BECKTON EPIC R397 K

LSF MINOLA T7172 W9041

HXC CONQUEST 4405P

TPIE LAKOTA 806

BUF CRK THE RIGHT KIND U199

PIE FAYETTE 1160

PIE CODE RED 9058

PIE EXPO 1162

PROS	HB	GM	CED	BW	WW	YW	ADG	DMI	M	ME
121	45	76	18	-5.9	67	121	0.34	1.92	38	17
15%	65%	6%	7%	4%	35%	15%	5%	83%	1%	96%
HPG	CEM	STAY	MARB	YG	CW	REA	FAT			
12	9	15	0.81	-0.05	21	0.38	0.01			
44%	18%	51%	5%	11%	55%	15%	30%			



D 9 MILE ENTERPRISE 8180

BULL DOB: 1/29/18 REG: 3968850

SPUR FRANCHISE OF GARTON

9 MILE FRANCHISE 6305

C-BAR ABIGRACE Y11

GMRA DEUCES 2222

DYK RED BIRD 1944-5105

5L BLACKBIRD 1322-1944

SPUR FRANCHISE 7070

H & H IRENE LASS 0135

TR COLT 45 UT806

C-BAR & BROWN ABIGRACE T712

GMRA TRILOGY 0226

GMRA PRIDSTOM 069

LCHMN GRANDCANYON 1244G

5L RED BIRD 401-1322

PROS	HB	GM	CED	BW	WW	YW	ADG	DMI	M	ME
112	61	51	16	-6.2	43	86	0.26	1.46	38	5
22%	38%	25%	14%	3%	95%	77%	31%	47%	1%	58%
HPG	CEM	STAY	MARB	YG	CW	REA	FAT			
13	8	17	0.44	0.03	16	0.34	0.04			
32%	30%	31%	44%	29%	71%	18%	85%			



E 5L ULTIMATUM 857-284F

BULL DOB: 3/9/18 REG: 3947897

5L BOURNE 117-48A
5L ULTIMATUM 1893-03C
 5L PRETTY GUN 1300-1893
 5L SIGNATURE 5615
5L MATTIE 1693-857
 5L MATTIE X708-1693

5L ADVANTAGE 3267-221Y
 5L ROXIE 854-117
 5L PRECISE 2777-248Y
 5L SYBILLI 1728-1300
 5L NORSEMAN KING 2291
 5L RUBY 199-01
 D H D TRAVELER 6807
 XXX MATTIE 708 HM

PROS	HB	GM	CED	BW	WW	YW	ADG	DMI	M	ME
88	56	32	9	-0.7	67	109	0.37	1.91	27	10
53%	46%	57%	85%	68%	33%	31%	30%	82%	34%	83%
HPG	CEM	STAY	MARB	YG	CW	REA	FAT			
13	4	17	0.51	0.11	19	0.27	0.06			
28%	87%	26%	32%	67%	64%	26%	97%			



F RREDS FUNDAMENTAL 8818

BULL DOB: 3/11/18 REG: 4044610

BIEBER ROLLIN DEEP Y118
RREDS SENECA 731C
 RREDS ASTER 309A
 BASIN EXT H695
BASIN PRIMROSE 4167
 BASIN PRIMROSE 879L

BIEBER ROOSEVELT W384
 BIEBER TILLY 399W
 BECKTON EPIC R397 K
 MLK CRK ASTER 175
 N BAR EMULATION EXT
 BASIN ROSE F521
 BASIN MAX 602C
 BASIN PRIMROSE 258

PROS	HB	GM	CED	BW	WW	YW	ADG	DMI	M	ME
97	36	60	11	-1.6	76	128	0.33	2.22	14	19
41%	77%	15%	67%	53%	12%	8%	7%	94%	98%	98%
HPG	CEM	STAY	MARB	YG	CW	REA	FAT			
12	7	15	0.49	0.25	56	0.40	0.08			
42%	58%	56%	35%	98%	2%	14%	99%			



G 9 MILE FRANCHISE 6305

BULL DOB: 3/02/16 REG: 3555188

SPUR FRANCHISE 7070
SPUR FRANCHISE OF GARTON
 H & H IRENE LASS 0135
 TR COLT 45 UT806
C-BAR ABIGRACE Y11
 C-BAR & BROWN ABIGRACE T712

BASIN FRANCHISE P142
 H&H L&C LADY BEHAVE 5040
 SYDGEN C C & 7
 H & H IRENE LASS 7116
 BECKTON CODY V E023
 BECKTON COCA L388 CK
 LJC MISSION STATEMENT P27
 BROWN MS ABIGRACE L7730

PROS	HB	GM	CED	BW	WW	YW	ADG	DMI	M	ME
137	66	70	16	-5.3	57	106	0.31	2.11	39	4
7%	29%	9%	15%	6%	67%	38%	13%	91%	1%	52%
HPG	CEM	STAY	MARB	YG	CW	REA	FAT			
10	13	15	0.53	0.04	42	0.64	0.04			
71%	1%	50%	29%	34%	9%	4%	86%			



H BAR M ENSURE 0114

BULL DOB: 3/19/20 REG: 4312795

ANDRAS FUSION R236
VGW CINCH 503
 VGW SS-STAR 1348
 5L RIDIN RED 196-334V
BAR M MS RIDIN RED 0187
 OHRR 47N COPPER VANNA 12S

ANDRAS IN FOCUS B175
 ANDRAS BELLE B167
 5L SMOKE SIGNAL 756-176V
 VGW JUL-STAR 0932
 5L BLAZIN RED 1354-6166
 5L SUNSHINE 394-196
 BHR LOGAN 734B
 MISS BHR CHAPTER ONE 553

PROS	HB	GM	CED	BW	WW	YW	ADG	DMI	M	ME
75	51	24	13	-2.0	72	119	0.29	2.09	30	8
70%	56%	69%	41%	47%	19%	17%	18%	91%	15%	71%
HPG	CEM	STAY	MARB	YG	CW	REA	FAT			
16	6	14	0.47	0.13	17	0.05	0.04			
9%	60%	69%	38%	75%	69%	62%	88%			



I WSM QUARTERBACK 060H

BULL DOB: 3/09/20 REG: 4296759

PIE STOCKMAN 4051
PIE QUARTERBACK 789
 PIE RUBY 520

LSF SAGA 1040Y
 PIE LAKOTA 046
 PIE ONE OF A KIND 352
 PIE RUBY 381
 VGW KING OF THE WEST
 NORSEMAN 1312 PJM
 LCC MAJOR LEAGUE A502M
 HRR RACHEL 438

5L NORSEMAN KING 2291
WSM RACHEL 204Z
 DR 438 RACHEL T48

PROS	HB	GM	CED	BW	WW	YW	ADG	DMI	M	ME
115	41	74	11	-3.6	61	108	0.29	1.74	32	9
21%	71%	7%	72%	22%	53%	34%	17%	71%	75%	75%
HPG	CEM	STAY	MARB	YG	CW	REA	FAT			
8	6	16	0.70	0.02	31	0.34	0.01			
91%	73%	40%	11%	27%	27%	18%	42%			



J 9 MILE STATESMAN 9215

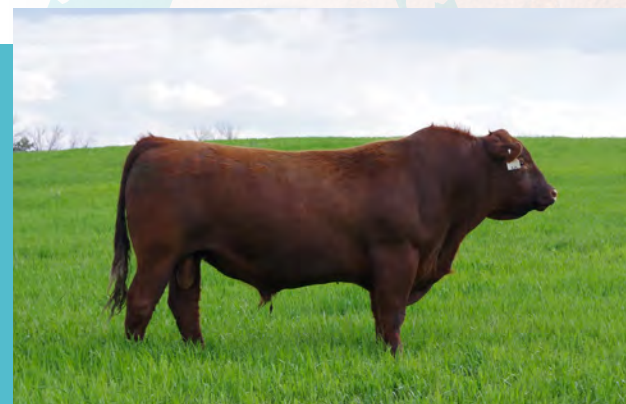
BULL DOB: 2/4/19 REG: 4146028

BIEBER ROLLIN DEEP Y118
RREDS SENECA 731C
 RREDS ASTER 309A

BIEBER ROOSEVELT W384
 BIEBER TILLY 399W
 BECKTON EPIC R397 K
 MLK CRK ASTER 175
 BUF CRK THE RIGHT KIND U199
 5L BLACK ADINA 525-560
 RED FINE LINE MULBERRY 26P
 BROWN-CBAR MS STONY ML P7500

5L INDEPENDENCE 560-298Y
9 MILE STONY W914-6114
 C-BAR STONY W914

PROS	HB	GM	CED	BW	WW	YW	ADG	DMI	M	ME
122	79	43	17	-4.4	59	96	0.23	1.57	21	9
15%	13%	39%	12%	13%	62%	57%	51%	57%	81%	79%
HPG	CEM	STAY	MARB	YG	CW	REA	FAT			
16	9	18	0.47	0.22	32	0.00	0.05			
8%	20%	16%	38%	96%	26%	71%	94%			



K WSM FORERUNNER 9158G

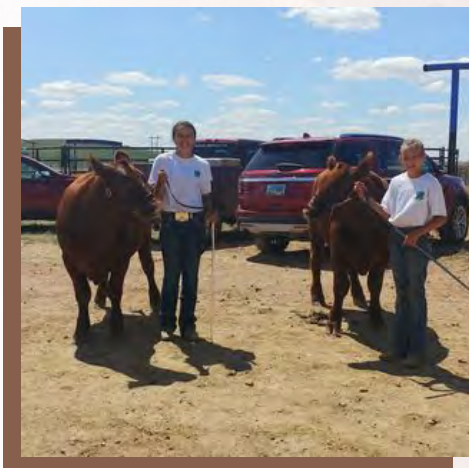
BULL DOB: 4/28/19 REG: 4145210

CRUMP PACESETTER 491
CRUMP FORERUNNER 6601
 MDM SUSIE 133-9

5L MTN SIGN 435-10Z
 MDM VERNICE 1020
 LJC JAVELIN M08
 MDM SUSIE 91-6
 BASIN HOB0 79E
 BASIN ERICA 330E
 BASIN TREND SETTER 6074
 BASIN PRIMROSE 2043

BASIN HOB0 0545
BIEBER PRIMROSE 107W
 BASIN PRIMROSE 24T9

PROS	HB	GM	CED	BW	WW	YW	ADG	DMI	M	ME
107	81	25	16	-5.6	55	89	0.21	1.66	26	2
28%	11%	67%	15%	5%	73%	71%	67%	65%	44%	40%
HPG	CEM	STAY	MARB	YG	CW	REA	FAT			
7	11	20	0.48	0.15	15	-0.05	0.04			
95%	6%	7%	36%	82%	74%	80%	85%			



L 9 MILE WENT YARD 0700

BULL DOB: 1/04/20 REG: 4294189

SPUR FRANCHISE OF GARTON
9 MILE FRANCHISE 6305
 C-BAR ABIGRACE Y11

SPUR FRANCHISE 7070
 H & H IRENE LASS 0135
 TR COLT 45 UT806
 C-BAR & BROWN ABIGRACE T712
 LCC ABOVE & BEYOND 1300J
 SUTH 2X CUB 723S
 LCHMN GRAND PRAIRIE
 CFLD ESTHER 044-463

ANGELO HEAVEN'S CUB 8073
RAISLAND ESTHER 140-1038
 CFLD ESTHER 463 1038

PROS	HB	GM	CED	BW	WW	YW	ADG	DMI	M	ME
104	79	24	16	-4.4	65	108	0.27	2.25	41	14
32%	13%	69%	20%	13%	40%	33%	28%	95%	1%	92%
HPG	CEM	STAY	MARB	YG	CW	REA	FAT			
9	12	20	0.40	0.06	21	0.49	0.06			
82%	3%	8%	52%	43%	55%	9%	98%			

**LOTS 1-3 ARE FULL BROTHERS
TO 2022 SALE HIGH SELLING BULL
WSM PLAYMAKER 1080J**



PIE QUARTERBACK 789



BEIBER PRIMROSE 107W

1 WSM QUARTERBACK 2101K
BULL DOB: 03/22/22 REG: 4627505 100% AR CAT A ACT BW: 70 ADJ WW: 630



What a bull to start the sale! The first of four full brothers to last year's sale topper going to ABS Global. We have had the privilege of latching onto one of the breeds elite cows and mating her with one of the most sought-after bulls in the breed right now. We feel this bull is just as good or better than his full brother Playmaker 1080J. He is wide from top to bottom, extra length, carries himself well as he walks through the pen and is hard to fault from not only a phenotype standpoint but on paper as well. Help yourselves here, as you will put on a lot of miles to find another like him, herd bull material for sure!

PROS	HB	GM	CED	BW	WW	YW	ADG	DMI	M	ME
132	91	41	17	-4.9	56	92	0.22	1.66	31	6
6%	3%	43%	6%	7%	68%	62%	54%	70%	8%	69%
HPG	CEM	STAY	MARB	YG	CW	REA	FAT			
11	9	22	0.58	-0.05	12	0.26	0.01			
66%	15%	1%	18%	8%	87%	24%	31%			

- PIE STOCKMAN 4051
- PIE QUARTERBACK 789
- PIE RUBY 520
- BASIN HOBO 0545
- BEIBER PRIMROSE 107W**
- BASIN PRIMROSE 24T9
- LSF SAGA 1040Y
- PIE LAKOTA 046
- PIE ONE OF A KIND 352
- PIE RUBY 381
- BASIN HOBO 79E
- BASIN ERICA 330E
- BASIN TREND SETTER 6074
- BASIN PRIMROSE 2043

2 WSM QUARTERBACK 2104K

BULL DOB: 03/23/22 REG: 4627511 100% AR CAT A ACT BW: 91 ADJ WW: 702



The second of the brothers and this guy is a very complete made bull from the ground up as well. He has the extra length that we appreciate in the Quarterback cattle. He walks on a solid foot and travels great across the pen. A herd bull prospect for sure. Take a serious look here, he could be the next best thing traveling in your pasture.

PROS	HB	GM	CED	BW	WW	YW	ADG	DMI	M	ME
138	89	49	16	-4.6	61	102	0.26	1.66	31	6
4%	4%	27%	15%	9%	49%	39%	28%	70%	8%	69%
HPG	CEM	STAY	MARB	YG	CW	REA	FAT			
11	8	22	0.56	-0.05	18	0.33	0.01			
66%	29%	1%	21%	8%	71%	14%	26%			

PIE STOCKMAN 4051
PIE QUARTERBACK 789
 PIE RUBY 520
 BASIN HOBO 0545
BIEBER PRIMROSE 107W
 BASIN PRIMROSE 24T9

LSF SAGA 1040Y
 PIE LAKOTA 046
 PIE ONE OF A KIND 352
 PIE RUBY 381
 BASIN HOBO 79E
 BASIN ERICA 330E
 BASIN TREND SETTER 6074
 BASIN PRIMROSE 2043

3 WSM QUARTERBACK 2124K

BULL DOB: 03/26/22 REG: 4627521 100% AR CAT A ACT BW: 87 ADJ WW: 626



The third of the brothers. These guys are like peas in a pod. You will notice his balanced appearance as he walks out. He has the extra length, muscle and style that we like to see in the cattle we raise. Don't forget to keep every daughter from these guys as well, Primrose 107W just turned 14 this January and is still producing embryos.

PROS	HB	GM	CED	BW	WW	YW	ADG	DMI	M	ME
111	84	27	18	-6.5	62	101	0.24	1.66	31	6
22%	6%	72%	4%	1%	45%	42%	38%	70%	8%	69%
HPG	CEM	STAY	MARB	YG	CW	REA	FAT			
11	9	21	0.61	0.06	2	0.09	0.04			
66%	14%	3%	15%	46%	98%	60%	93%			

PIE STOCKMAN 4051
PIE QUARTERBACK 789
 PIE RUBY 520
 BASIN HOBO 0545
BIEBER PRIMROSE 107W
 BASIN PRIMROSE 24T9

LSF SAGA 1040Y
 PIE LAKOTA 046
 PIE ONE OF A KIND 352
 PIE RUBY 381
 BASIN HOBO 79E
 BASIN ERICA 330E
 BASIN TREND SETTER 6074
 BASIN PRIMROSE 2043



4 WSM FRANCHISE 2063K

BULL DOB: 03/19/22 REG: 4626985 100% AR CAT A

ACT BW: 78 ADJ WW: 771

SPUR FRANCHISE OF GARTON | SPUR FRANCHISE 7070
 9 MILE FRANCHISE 6305 | H & H IRENE LASS 0135
 C-BAR ABIGRACE Y11 | TR COLT 45 UT806
 PIE QUARTERBACK 789 | C-BAR & BROWN ABIGRACE T712
 WSM 049H | PIE STOCKMAN 4051
 WSM MISS SAKIC 370A | PIE RUBY 520
 | LEAND SAKIC 33X
 | 001X WSM

PROS	HB	GM	CED	BW	WW	YW	ADG	DMI	M	ME
136	80	56	14	-5.7	59	106	0.3	1.87	38	7
4%	10%	16%	27%	3%	58%	30%	9%	86%	1%	71%
HPG	CEM	STAY	MARB	YG	CW	REA	FAT			
10	11	19	0.57	0.02	22	0.24	0.01			
79%	4%	8%	19%	25%	55%	27%	44%			

This is the first year we have used Franchise 6305 and we will have more calves coming this spring for obvious reasons. 2063K has power and performance written all over him while maintaining a modest birth weight. A unique breeding piece of Franchise 6305 and Quarterback 789 and worked like a charm. Super smooth fronted, tons of middle and muscle as well.



5 WSM ENTERPRISE 2029K

BULL DOB: 03/15/22 REG: 4626807 100% AR CAT A

ACT BW: 90 ADJ WW: 660

9 MILE FRANCHISE 6305 | SPUR FRANCHISE OF GARTON
 9 MILE ENTERPRISE 8180 | C-BAR ABIGRACE Y11
 DYK RED BIRD 1944-5105 | GMRA DEUCES 2222
 | 5L BLACKBIRD 1322-1944
 BHR BANKER 142 | TNTS BANK STATEMENT T272
 WSM MISS BANKER455B | MISS BHR CHAPTER ONE 637
 WASEM ZINA 005X | ROY ROGERS 5604
 | MESSMER ZINA 05N

PROS	HB	GM	CED	BW	WW	YW	ADG	DMI	M	ME
115	58	56	14	-1.8	72	118	0.28	1.46	31	2
18%	43%	17%	27%	50%	12%	11%	14%	49%	10%	41%
HPG	CEM	STAY	MARB	YG	CW	REA	FAT			
11	8	15	0.5	0.1	35	0.24	0.03			
57%	37%	57%	30%	69%	13%	27%	71%			

An outstanding son of Enterprise 8180 that has good length and muscle expression. He stems from a Banker 142 cow that are known for growth and performance. A cow bull that will bring in heavy calves in the fall.



6 WSM SENECA 2048K

BULL DOB: 03/17/22 REG: 4626811 100% AR CAT A

ACT BW: 83 ADJ WW: 668

BIEBER ROLLIN DEEP Y118 | BIEBER ROOSEVELT W384
 RREDS SENECA 731C | BIEBER TILLY 399W
 RREDS ASTER 309A | BECKTON EPIC R397 K
 | MLK CRK ASTER 175
 BROWN JYJ REDEMPTION Y1334 | BECKTON NEBULA P P707
 WSM FORGIVEN 409B | JYJ MS JOLENE W16
 WSM ZINA 112Y | SHOCO DATA
 | MESSMER ZINA S005

PROS	HB	GM	CED	BW	WW	YW	ADG	DMI	M	ME
85	65	21	13	-4.1	60	94	0.21	1.65	21	3
63%	30%	83%	39%	14%	51%	58%	65%	69%	88%	48%
HPG	CEM	STAY	MARB	YG	CW	REA	FAT			
10	8	17	0.28	0.16	29	0.28	0.06			
70%	26%	31%	82%	91%	28%	21%	99%			

2048K leads of a very consistent sire group of calves. A dark red bull that is about as stout and wide as you can make one while keeping frame size in check. A cattleman's kind of bull that does a lot of things right in terms of performance and structure.

7**WSM SENECA 2064K**

BULL DOB: 03/19/22 REG: 4626821 100% AR CAT A

ACT BW: 94 ADJ WW: 696

BIEBER ROLLIN DEEP Y118 BIEBER ROOSEVELT W384
BIEBER TILLY 399W**RRDS SENECA 731C**RRDS ASTER 309A BECKTON EPIC R397 K
MLK CRK ASTER 175
TNTS BANK STATEMENT T272
MISS BHR CHAPTER ONE 637

BHR BANKER 142

WSM MISS BANKER 440BMESSMER ZINA S005 BECKTON HASTEN P292
MESSMER ZINA 247P

PROS	HB	GM	CED	BW	WW	YW	ADG	DMI	M	ME
70	78	-8	11	-1.2	63	97	0.21	1.57	22	1
84%	11%	99%	75%	63%	39%	50%	63%	60%	80%	39%
HPG	CEM	STAY	MARB	YG	CW	REA	FAT			
11	7	19	0.19	0.1	7	0.1	0.06			
67%	59%	8%	95%	69%	95%	56%	98%			



Another outstanding son of Seneca 731C. We appreciate the depth of body and thickness he brings to the table in a moderate package. We will be calving out our first Seneca daughters this spring and are very excited to see how the overall thickness and muscle that he passes on.

8**WSM WENTYARD 2010K**

BULL DOB: 03/12/22 REG: 4626909 100% AR CAT A

ACT BW: 84 ADJ WW: 614

9 MILE FRANCHISE 6305 SPUR FRANCHISE OF GARTON
C-BAR ABIGRACE Y11**9 MILE WENT YARD 0700**RAISLAND ESTHER 140-1038 ANGELO HEAVEN'S CUB 8073
CFLD ESTHER 463 1038

RED BAR-E-L LOOKIN COOL 164D

WSM COOL PRINCESS 805FWSM FORGIVEN PRINCESS 408B BROWN JYJ REDEMPTION Y1334
WSM PRINCESS 202Z

PROS	HB	GM	CED	BW	WW	YW	ADG	DMI	M	ME
69	29	40	11	-2.7	61	94	0.21	1.95	30	6
86%	91%	45%	68%	34%	50%	57%	63%	91%	13%	69%
HPG	CEM	STAY	MARB	YG	CW	REA	FAT			
9	7	12	0.39	0.03	38	0.42	0.01			
85%	41%	84%	55%	29%	7%	7%	44%			



We were looking for a Franchise son a couple of years ago and came across Went Yard 0700 at 9 Mile Red Angus. A true curve bending bull that has a ton of performance. As you appraise 2010K, you can't help but notice the muscle expression from his hip to his lower hind quarter. Deep flanked and big middled bull.

9**WSM WENTYARD 2035K**

BULL DOB: 03/16/22 REG: 4626877 100% AR CAT A

ACT BW: 86 ADJ WW: 641

9 MILE FRANCHISE 6305 SPUR FRANCHISE OF GARTON
C-BAR ABIGRACE Y11**9 MILE WENT YARD 0700**RAISLAND ESTHER 140-1038 ANGELO HEAVEN'S CUB 8073
CFLD ESTHER 463 1038

ANDRAS FUSION R236

WSM PANDORA 704EWSM B PANDORA 591C BHR BANKER 142
WSM PANDORA 210Z

PROS	HB	GM	CED	BW	WW	YW	ADG	DMI	M	ME
116	79	37	15	-3.9	61	95	0.21	1.8	32	7
16%	10%	52%	21%	16%	49%	56%	63%	81%	6%	71%
HPG	CEM	STAY	MARB	YG	CW	REA	FAT			
9	11	19	0.49	0	24	0.47	0.04			
89%	3%	8%	33%	19%	46%	5%	84%			



Tons of capacity in the middle of this guy and has the neck extension that we don't normally see in these calves. He goes back to one of our Fusion R236 cows that is doing a tremendous job in our herd. A very complete bull that you will want to keep daughters out of.



10 WSM ENSURE 2140K

BULL DOB: 04/03/22 REG: 4626973 100% AR CAT A

ACT BW: 85 ADJ WW: 748

VGW CINCH 503 ANDRAS FUSION R236
VGW SS-STAR 1348

BAR M ENSURE 0114

BAR M MS RIDIN RED 0187

5L BOURNE 117-48A

NSFR LARKABA G17

NSFR LARKABA D229

5L RIDIN RED 196-334V
MISS BHR LOGAN 727
5L ADVANTAGE 3267-221Y
5L ROXIE 854-117
NSFR GRETZKY W9
NSFR MISS LARKABA P189

PROS	HB	GM	CED	BW	WW	YW	ADG	DMI	M	ME
74	43	31	12	0	82	126	0.28	1.8	31	7
80%	73%	64%	65%	83%	2%	5%	18%	82%	9%	73%
HPG	CEM	STAY	MARB	YG	CW	REA	FAT			
13	5	13	0.46	0.12	28	0.16	0.04			
22%	82%	76%	39%	78%	32%	43%	85%			

What a STUD! We feel this guy has a bright future no matter where he ends up. We purchased Ensure 0114 from Barenthsen Red Angus in 2021 and are sure glad we did. The total mass of this bull along with his well-mannered disposition is what we strive for here at Wasem Red Angus. This guy is super wide from his base to his top, is loaded with red meat and has power and performance written all over him.



11 WSM GUIDANCE 2099K

BULL DOB: 03/22/22 REG: 4627503 100% AR CAT A

ACT BW: 80 ADJ WW: 590

MCD SPUR 6111 SPUR FRANCHISE OF GARTON
MCD-2 RITOESS 3155

EGL GUIDANCE 9117

AHL DUCHESS 427B

LSF SAGA 1040Y

TBJR DINA 306

LSF DINA N3044 S6120

BROWN JYJ REDEMPTION Y1334
AHL DUCHESS 9U
BECKTON EPIC R397 K
LSF MINOLA T7172 W9041
BUF CRK ROMEO L081
LSF DINA J1404 N3044

PROS	HB	GM	CED	BW	WW	YW	ADG	DMI	M	ME
99	47	52	18	-5.3	54	95	0.25	1.65	30	3
39%	66%	23%	4%	5%	73%	56%	33%	69%	12%	46%
HPG	CEM	STAY	MARB	YG	CW	REA	FAT			
14	11	12	0.54	0.17	28	0.08	0.04			
15%	4%	85%	24%	93%	30%	61%	93%			

Guidance 2099K is a balanced bull in terms of his overall appearance. He exhibits adequate muscle, depth of body, rib shape and has some added length. He may be one of the first EGL Guidance 9117 calves to sell this year. We are excited about what he brings to the table for us in terms of performance and outcross genetics, so we kept a full brother of 2099K to use in our herd for the upcoming years.



12 WSM QUARTERBACK 2122K

BULL DOB: 03/25/22 REG: 4626901 100% AR CAT A

ACT BW: 98 ADJ WW: 670

PIE STOCKMAN 4051 LSF SAGA 1040Y
PIE LAKOTA 046

PIE QUARTERBACK 789

PIE RUBY 520

PIE THE COWBOY KIND 343

WSM OLYMPIA 842F

WSM MISS BANKER 362A

PIE ONE OF A KIND 352
PIE RUBY 381
BUF CRK THE RIGHT KIND U199
PIE CASCADE 561
BHR BANKER 142
WSM OLYMIPA 122Y

PROS	HB	GM	CED	BW	WW	YW	ADG	DMI	M	ME
109	44	66	13	-2.7	61	104	0.27	1.73	34	11
24%	71%	8%	51%	34%	48%	35%	22%	76%	2%	91%
HPG	CEM	STAY	MARB	YG	CW	REA	FAT			
11	6	16	0.62	-0.13	26	0.58	-0.01			
65%	64%	45%	14%	2%	39%	2%	7%			

A true powerhouse kind of bull. It's hard to go wrong with Quarterback 789 x Cowboy Kind 343. This guy has it all, wide topped, big explosive hip, great length of body, tremendous bone structure, awesome carcass epds and a mild disposition. He is one that we could have led the sale with.

13 WSM QUARTERBACK 2022K

BULL DOB: 03/15/22 REG: 4626813 100% AR CAT A

ACT BW: 85 ADJ WW: 659

PIE STOCKMAN 4051 LSF SAGA 1040Y
PIE LAKOTA 046

PIE QUARTERBACK 789

PIE RUBY 520 PIE ONE OF A KIND 352
PIE RUBY 381
BECKTON NEBULA P P707
JYJ MS JOLENE W16

BROWN JYJ REDEMPTION Y1334

WSM FORGIVEN PRINCESS 408B

WSM PRINCESS 202Z 5L NORSEMAN KING 2291
MISS BHR PRINCESS 308



PROS	HB	GM	CED	BW	WW	YW	ADG	DMI	M	ME
123	47	76	16	-5	66	119	0.33	1.82	29	9
11%	66%	3%	15%	6%	28%	11%	3%	83%	19%	84%
HPG	CEM	STAY	MARB	YG	CW	REA	FAT			
10	7	16	0.74	0.07	32	0.17	0.01			
74%	52%	42%	5%	55%	20%	40%	41%			

Another stellar Quarterback 789 calf that stems from a top Redemption Y1334 cow in our herd. 2022K has been stamped with the extra length, wide body and deep side that his sire is known for. Have a look at the number profile as well, he's not one to be overlooked.

14 WSM FRANCHISE 2025K

BULL DOB: 03/15/22 REG: 4626981 100% AR CAT A

ACT BW: 85 ADJ WW: 639

SPUR FRANCHISE OF GARTON H & H IRENE LASS 0135

9 MILE FRANCHISE 6305

C-BAR ABIGRACE Y11 TR COLT 45 UT806
C-BAR & BROWN ABIGRACE T712

RED BAR-E-L LOOKIN COOL 164D

WSM 0132H

WSM OLYMPIA 222Z SHOCO DATA
MESSMER OLYMPIA 34N



PROS	HB	GM	CED	BW	WW	YW	ADG	DMI	M	ME
104	59	45	10	0.4	67	111	0.27	2.05	32	5
32%	42%	35%	86%	88%	26%	22%	20%	94%	4%	63%
HPG	CEM	STAY	MARB	YG	CW	REA	FAT			
10	8	16	0.39	-0.03	36	0.44	0			
82%	29%	42%	55%	12%	11%	6%	19%			

Now here is a tank of a fella that has the herd bull look to him. Long, deep sided, wide from front to back and has good bone structure as well. He is out of an up and coming, first calf heifer sired by Looking Cool.

15 WSM SENECA 2034K

BULL DOB: 03/16/22 REG: 4626847 100% AR CAT A

ACT BW: 92 ADJ WW: 598

BIEBER ROLLIN DEEP Y118 BIEBER ROOSEVELT W384
BIEBER TILLY 399W

RREDS SENECA 731C

RREDS ASTER 309A BECKTON EPIC R397 K
MLK CRK ASTER 175

5L NORSEMAN KING 2291

WSM VANNA 615D

001X WSM BJR MAKE MY DAY 981
EURA VANNA 802



PROS	HB	GM	CED	BW	WW	YW	ADG	DMI	M	ME
99	84	15	11	-2.5	62	104	0.26	1.66	20	2
38%	6%	90%	76%	37%	44%	34%	24%	70%	90%	44%
HPG	CEM	STAY	MARB	YG	CW	REA	FAT			
10	7	20	0.11	0.15	29	0.24	0.06			
79%	46%	3%	99%	90%	27%	27%	98%			

A bull that is typical of the Seneca's, super soggy, wide bodied, full of muscle and great shape of rib. Those traits along with his Norseman King dam, should make him a bull to keep daughters out of.

16 WSM SENECA 2045K

BULL DOB: 03/17/22 REG: 4626865 100% AR CAT A

ACT BW: 78 ADJ WW: 660

BIEBER ROLLIN DEEP Y118 BIEBER ROOSEVELT W384
BIEBER TILLY 399W

RREDS SENECA 731C

RREDS ASTER 309A

BROWN JYJ REDEMPTION Y1334

WSM MISS BANKER 603D

WSM MISS BANKER 457B

BECKTON EPIC R397 K
MLK CRK ASTER 175
BECKTON NEBULA P P707
JYJ MS JOLENE W16
BHR BANKER 142
WASEM PRINCESS 902W

PROS	HB	GM	CED	BW	WW	YW	ADG	DMI	M	ME
134	100	33	12	-2.4	76	131	0.34	1.86	22	5
5%	1%	60%	65%	39%	6%	3%	1%	85%	79%	63%
HPG	CEM	STAY	MARB	YG	CW	REA	FAT			
11	7	23	0.2	0.22	40	0.2	0.06			
53%	61%	1%	94%	99%	5%	34%	99%			



One would never know this calf was a twin unless you read this or look at his pedigree on the RAAA website. He hit the ground and never looked back. He hangs right in there with the rest of the Seneca calves and is out of the 603D cow that had the Lot 1 bull in our sale last year going to Dustin Jackson. His full brother sells as lot 25.

17 WSM ENTERPRISE 2016K

BULL DOB: 03/14/22 REG: 4626831 100% AR CAT A

ACT BW: 77 ADJ WW: 631

9 MILE FRANCHISE 6305 SPUR FRANCHISE OF GARTON
C-BAR ABIGRACE Y11

9 MILE ENTERPRISE 8180

DYK RED BIRD 1944-5105

LJC MISSION STATEMENT P27

WSM MS ZINA 575C

WASEM ZINA 003X

GMRA DEUCES 2222
5L BLACKBIRD 1322-1944
LJC LANCER 806
LJC HANNAH 106
LCC MAJOR LEAGUE A502M
MESSMER ZINA S005

PROS	HB	GM	CED	BW	WW	YW	ADG	DMI	M	ME
115	54	61	16	-4.9	59	104	0.28	1.59	31	6
17%	51%	12%	12%	7%	55%	34%	15%	62%	8%	67%
HPG	CEM	STAY	MARB	YG	CW	REA	FAT			
10	9	15	0.48	0	31	0.6	0.04			
68%	14%	50%	34%	19%	21%	2%	89%			



Another outstanding Enterprise 8180 calf that has some calving ease along with growth and carcass. His dam has done a tremendous job earning herself a 104 MPPA on 6 head, all being bulls and she is AI bred this year with a bull again, by Went Yard 0700.

18 WSM ENTERPRISE 2077K

BULL DOB: 03/20/22 REG: 4626805 100% AR CAT A

ACT BW: 83 ADJ WW: 632

9 MILE FRANCHISE 6305 SPUR FRANCHISE OF GARTON
C-BAR ABIGRACE Y11

9 MILE ENTERPRISE 8180

DYK RED BIRD 1944-5105

BHR BANKER 142

WSM MISS BANKER 458B

WASEM RACHEL 004X

GMRA DEUCES 2222
5L BLACKBIRD 1322-1944
TNTS BANK STATEMENT T272
MISS BHR CHAPTER ONE 637
BAR R SPRING VACATION R13
DR 438 RACHEL T48

PROS	HB	GM	CED	BW	WW	YW	ADG	DMI	M	ME
104	74	30	17	-2.8	56	92	0.23	1.12	32	-1
31%	15%	67%	6%	32%	68%	62%	51%	22%	6%	28%
HPG	CEM	STAY	MARB	YG	CW	REA	FAT			
12	9	17	0.35	0.03	12	0.23	0.04			
47%	10%	27%	65%	32%	88%	29%	87%			



A thick made, smooth fronted, deep sided bull that should be dual purpose if the need arises to breed both heifers and cows.

19 WSM MERLIN 2051K

BULL DOB: 03/17/22 REG: 4627019 100% AR CAT A

ACT BW: 67 ADJ WW: 652

LJC MERLIN T179 | LJC MISSION STATEMENT P27
BUF CRK REDPRIDE N179

WFL MERLIN 018A

WFL COMMITMENT 042Y | BROWN COMMITMENT S7206

WFL PROFITMAKER E7030 | WFL JEWELMAKER 9024
WFL MERLIN 018A
WFL PROSPECT

WSM 031H

WSM EPIC LIZ 822F | PIE THE COWBOY KIND 343
WSM EPIC LIZ 316A



PROS	HB	GM	CED	BW	WW	YW	ADG	DMI	M	ME
105	42	63	18	-4.2	72	120	0.3	1.2	35	-1
30%	75%	10%	3%	12%	12%	9%	9%	27%	1%	28%
HPG	CEM	STAY	MARB	YG	CW	REA	FAT			
9	9	12	0.44	-0.14	29	0.58	-0.01			
90%	18%	82%	43%	2%	28%	2%	4%			

The only Merlin 018A son in the sale. Out of a first calf heifer and one of the few Profitmakers we have. A sure bet dark red heifer bull with some outstanding growth and carcass numbers to boot.

20 WSM FRANCHISE 2106K

BULL DOB: 03/23/22 REG: 4626987 100% AR CAT A

ACT BW: 98 ADJ WW: 745

SPUR FRANCHISE OF GARTON | SPUR FRANCHISE 7070
9 MILE FRANCHISE 6305 | H & H IRENE LASS 0135

C-BAR ABIGRACE Y11 | TR COLT 45 UT806
C-BAR & BROWN ABIGRACE T712

RED BAR-E-L LOOKIN COOL 164D | RED BAR-E-L BOOSTER 147B

WSM COOL GINNIE 0139H

WSM GINNIE 311A | BAR-E-L OROCUS 165W
BROWN COMMITMENT S7206
105Y WSM



PROS	HB	GM	CED	BW	WW	YW	ADG	DMI	M	ME
71	7	64	6	2.5	76	124	0.29	1.92	34	2
83%	99%	9%	99%	98%	6%	6%	10%	89%	1%	45%
HPG	CEM	STAY	MARB	YG	CW	REA	FAT			
10	4	8	0.64	0.02	39	0.42	0.01			
82%	92%	98%	12%	25%	7%	7%	37%			

Dark red Franchise out of a Looking Cool cow that has growth and carcass numbers in the top of the breed and is out of a first calver. If you are looking to add pounds at weaning, you have found your bull.

21 WSM FRANCHISE 2024K

BULL DOB: 03/15/22 REG: 4627055

75% AR 24.5% SM 0.5% XX CAT 3

ACT BW: 89 ADJ WW: 672

SPUR FRANCHISE OF GARTON | SPUR FRANCHISE 7070
9 MILE FRANCHISE 6305 | H & H IRENE LASS 0135

C-BAR ABIGRACE Y11 | TR COLT 45 UT806
C-BAR & BROWN ABIGRACE T712

RED BAR-E-L LOOKIN COOL 164D | RED BAR-E-L BOOSTER 147B

WSM EXCEL 0141H

DKSR MS EXCEL Z608 | BAR-E-L OROCUS 165W
IPU 105L EXCEL 132W
DSR DIAMOND MAKER T439



PROS	HB	GM	CED	BW	WW	YW	ADG	DMI	M	ME
102	50	52	7	0.5	63	105	0.26	1.71	32	-2
35%	60%	23%	97%	88%	40%	34%	28%	74%	6%	24%
HPG	CEM	STAY	MARB	YG	CW	REA	FAT			
11	7	13	0.31	-0.06	42	0.54	-0.01			
57%	55%	73%	75%	6%	4%	3%	7%			

Another STUD! Keep in mind this guy is 25% Simmental. You will definitely find this guy come sale day. Super wide and thick throughout with an explosive hip he's hard to fault. Commercial cattlemen, take a look here and help yourself to adding more pounds at weaning time. He may be one of the best Sim X bulls we have produced.

22 WSM QUARTERBACK 2072K

BULL DOB: 03/19/22 REG: 4626983 100% AR CAT A

ACT BW: 90 ADJ WW: 662

PIE STOCKMAN 4051 LSF SAGA 1040Y
 PIE QUARTERBACK 789 PIE LAKOTA 046
 PIE RUBY 520 PIE ONE OF A KIND 352
 PIE RUBY 381
 C-BAR EL GRANDE 100C C-BAR ELDORADO 114Z
 WSM 057H C-BROWN&KM ABIGRACE T715
 WSM ZINA 218Z SHOCO DATA
 MESSMER ZINA S005

PROS	HB	GM	CED	BW	WW	YW	ADG	DMI	M	ME
106	32	74	11	-2	71	122	0.32	1.82	27	11
29%	88%	3%	77%	47%	15%	8%	4%	83%	41%	89%
HPG	CEM	STAY	MARB	YG	CW	REA	FAT			
10	4	14	0.81	-0.02	26	0.35	0.01			
68%	92%	63%	3%	14%	40%	12%	33%			



We are excited that our daughter Kacee has her first bull in the sale. This moderate framed, deep bodied bull will add power to a herd. He's a wide framed, well-balanced bull with the EPD's to back him up. Another impressive bull out of Quarterback, this is one you won't want to miss.

23 WSM STATESMAN 2030K

BULL DOB: 03/15/22 REG: 4626891

99.9% AR 0.1% XX CAT B

ACT BW: 93 ADJ WW: 544

RREDS SENECA 731C BIBER ROLLIN DEEP Y118
 RREDS ASTER 309A
 9 MILE STATESMAN 9215
 9 MILE STONY W914-6114
 5L INDEPENDENCE 560-298Y
 C-BAR STONY W914
 RED BAR-E-L CITIZEN 127C
 RED U-2 JUSTIFIED 235Z
 RED WRAZ CHER 21Y
 WSM LIZZY 845F
 WASEM LIZZY 010X
 LELAND DESTINY 7023T
 MESSMER LIZZY M80

PROS	HB	GM	CED	BW	WW	YW	ADG	DMI	M	ME
87	62	25	14	-1.6	52	82	0.19	1.38	18	3
60%	36%	77%	38%	55%	81%	79%	75%	43%	98%	50%
HPG	CEM	STAY	MARB	YG	CW	REA	FAT			
12	7	17	0.38	0.15	17	-0.1	0.03			
41%	59%	24%	58%	88%	73%	92%	76%			



(NO DNA) The only Statesman calf to sell this year. We lost Statesman due to injury this spring, but fortunately we do have some insurance in the tank. Dark red calf that has nice rib shape and plenty of muscle.

24 WSM SENECA 2094K

BULL DOB: 03/21/22 REG: 4626967 100% AR CAT A

ACT BW: 87 ADJ WW: 673

BIBER ROOSEVELT W384
 BIBER TILLY 399W
 RREDS SENECA 731C
 RREDS ASTER 309A
 BECKTON EPIC R397 K
 MLK CRK ASTER 175
 WFL MERLIN 018A
 WFL COMMITMENT 042Y
 WSM 937G
 WSM RACHEL 744E
 PFFR POWER DEAL 428
 WSM RACHEL 204Z

PROS	HB	GM	CED	BW	WW	YW	ADG	DMI	M	ME
71	47	24	10	-0.5	81	123	0.26	2.03	25	9
83%	65%	78%	87%	75%	2%	7%	27%	94%	55%	82%
HPG	CEM	STAY	MARB	YG	CW	REA	FAT			
9	4	16	0.41	0.07	29	0.33	0.04			
88%	92%	36%	50%	51%	29%	14%	84%			



Another thick made Seneca out of a 018A daughter. This guy has about as much middle to him as you can put in one and ranks in the top of the breed for growth.

25 WSM SENECA 2046K

BULL DOB: 03/17/22 REG: 4627059 100% AR CAT A

ACT BW: 65 ADJ WW: 552

BIEBER ROLLIN DEEP Y118 BIEBER ROOSEVELT W384
BIEBER TILLY 399W

RREDS SENECA 731C

RREDS ASTER 309A

BROWN JYJ REDEMPTION Y1334

WSM MISS BANKER 603D

WSM MISS BANKER 457B

BECKTON EPIC R397 K
MLK CRK ASTER 175
BECKTON NEBULA P P707
JYJ MS JOLENE W16
BHR BANKER 142
WASEM PRINCESS 902W



PROS	HB	GM	CED	BW	WW	YW	ADG	DMI	M	ME
95	78	16	15	-2.6	71	112	0.26	1.86	22	5
46%	11%	89%	20%	35%	15%	19%	27%	85%	79%	63%
HPG	CEM	STAY	MARB	YG	CW	REA	FAT			
11	8	19	0.25	0.13	27	0.14	0.04			
53%	24%	11%	88%	84%	35%	47%	89%			

A twin and full brother to Lot 16. Another thick made calf with lots of middle to him and out of an outstanding cow.

26 WSM WENTYARD 2007K

BULL DOB: 03/10/22 REG: 4626797 100% AR CAT A

ACT BW: 77 ADJ WW: 571

9 MILE FRANCHISE 6305 SPUR FRANCHISE OF GARTON
C-BAR ABIGRACE Y11

9 MILE WENT YARD 0700

RAISLAND ESTHER 140-1038

LEAND SAKIC 33X

WSM MISS SAKIC 358A

801U WSM

ANGELO HEAVEN'S CUB 8073
CFLD ESTHER 463 1038
RED SIX MILE SAKIC 832S
LELAND GRAND CANYON 3077
BIEBER XCEPTION 10083
MESSMER GINNIE 233N



PROS	HB	GM	CED	BW	WW	YW	ADG	DMI	M	ME
71	53	19	17	-4.3	55	89	0.22	1.54	30	6
83%	54%	86%	6%	12%	72%	67%	58%	58%	12%	66%
HPG	CEM	STAY	MARB	YG	CW	REA	FAT			
10	12	14	0.22	0.03	19	0.24	0.02			
77%	1%	66%	92%	29%	69%	27%	64%			

A calving ease bull that should work well on heifers. He is big middled and deep sided.

27 WSM WENTYARD 2044K

BULL DOB: 03/16/22 REG: 4626945 100% AR CAT A

ACT BW: 83 ADJ WW: 623

9 MILE FRANCHISE 6305 SPUR FRANCHISE OF GARTON
C-BAR ABIGRACE Y11

9 MILE WENT YARD 0700

RAISLAND ESTHER 140-1038

PIE THE COWBOY KIND 343

WSM 939G

WSM MISS BANKER 457B

ANGELO HEAVEN'S CUB 8073
CFLD ESTHER 463 1038
BUF CRK THE RIGHT KIND U199
PIE CASCADE 561
BHR BANKER 142
WASEM PRINCESS 902W



PROS	HB	GM	CED	BW	WW	YW	ADG	DMI	M	ME
135	83	52	15	-2.5	71	120	0.31	1.89	31	9
5%	7%	22%	21%	37%	16%	9%	6%	87%	8%	82%
HPG	CEM	STAY	MARB	YG	CW	REA	FAT			
10	11	19	0.58	0.11	27	0.11	0.03			
77%	3%	7%	18%	73%	36%	54%	69%			

A very complete bull that is wide from top to bottom with added length. He also has some added performance with Cowboy Kind 343 on the bottom side.

28 WSM QUARTERBACK 2075K

BULL DOB: 03/19/22 REG: 4626839 100% AR CAT A

ACT BW: 86 ADJ WW: 546

PIE STOCKMAN 4051 LSF SAGA 1040Y
 PIE LAKOTA 046
PIE QUARTERBACK 789
 PIE RUBY 520 PIE ONE OF A KIND 352
 PIE RUBY 381
 LJC MISSION STATEMENT P27 LJC LANCER 806
WSM RACHEL 614D LJC HANNAH 106
 DR 438 RACHEL T48 LCC MAJOR LEAGUE A502M
 HRR RACHEL 438

PROS	HB	GM	CED	BW	WW	YW	ADG	DMI	M	ME
91	44	47	14	-3.4	65	114	0.3	1.88	26	12
53%	71%	30%	30%	22%	32%	17%	7%	87%	44%	93%
HPG	CEM	STAY	MARB	YG	CW	REA	FAT			
10	8	15	0.51	-0.08	17	0.37	0			
68%	39%	51%	29%	4%	74%	11%	19%			



A super thick made bull with some added length. Every year we have one that finds you in the pen, and this happens to be the one this year. We appreciate and pride ourselves on the disposition of the cattle we raise.

29 WSM FRANCHISE 2001K

BULL DOB: 03/06/22 REG: 4626999 100% AR CAT A

ACT BW: 71 ADJ WW: 631

SPUR FRANCHISE OF GARTON SPUR FRANCHISE 7070
 H & H IRENE LASS 0135
9 MILE FRANCHISE 6305
 C-BAR ABIGRACE Y11 TR COLT 45 UT806
 C-BAR & BROWN ABIGRACE T712
 PIE QUARTERBACK 789 PIE STOCKMAN 4051
WSM 054H PIE RUBY 520
 WSM IMPRESSION 454B MUSHRUSH IMPRESSIVE CA U236
 WASEM LIZZY 905W

PROS	HB	GM	CED	BW	WW	YW	ADG	DMI	M	ME
114	61	52	15	-4.7	68	119	0.31	1.9	34	7
19%	37%	22%	16%	8%	22%	11%	5%	88%	2%	70%
HPG	CEM	STAY	MARB	YG	CW	REA	FAT			
10	10	16	0.56	0.06	25	0.25	0.03			
80%	5%	45%	21%	48%	44%	26%	76%			



A 3/4 brother to Lot 4. The first calf born last spring and a cold day it was. Calving ease along with some growth and carcass numbers that will surely bring in some heavy calves. He should work well on any type of heifer without giving up performance.

30 WSM FRANCHISE 2083K

BULL DOB: 03/20/22 REG: 4627005 100% AR CAT A

ACT BW: 77 ADJ WW: 687

SPUR FRANCHISE OF GARTON SPUR FRANCHISE 7070
 H & H IRENE LASS 0135
9 MILE FRANCHISE 6305
 C-BAR ABIGRACE Y11 TR COLT 45 UT806
 C-BAR & BROWN ABIGRACE T712
 RED BAR-E-L LOOKIN COOL 164D RED BAR-E-L BOOSTER 147B
WSM 0144H BAR-E-L OROCUS 165W
 WSM MS GINNIE 569C LJC MISSION STATEMENT P27
 105Y WSM

PROS	HB	GM	CED	BW	WW	YW	ADG	DMI	M	ME
75	44	30	13	-2.6	61	102	0.26	1.93	32	3
78%	70%	65%	52%	35%	48%	39%	29%	90%	4%	52%
HPG	CEM	STAY	MARB	YG	CW	REA	FAT			
10	10	13	0.34	0.05	25	0.19	0.02			
74%	9%	80%	68%	41%	42%	37%	47%			



This heifer bull prospect is clean and smooth fronted. Has the extra capacity in the middle to add some extra pounds.

31 WSM ULTIMATUM 2153K

BULL DOB: 04/07/22 REG: 4626929 100% AR CAT A

ACT BW: 97 ADJ WW: 647

5L ULTIMATUM 1893-03C | 5L BOURNE 117-48A
5L PRETTY GUN 1300-1893

5L ULTIMATUM 857-284F

5L MATTIE 1693-857 | 5L SIGNATURE 5615
5L MATTIE X708-1693

RED U-2 RECKONING 149A

RED U-2 RECON 192Y
RED U-2 ANEXA 271Y

CSF ANNIE 64F

PFFR MS LOGAN 620 | BADLANDS ALL BEEF 114J
MISS BHR LOGAN 90



PROS	HB	GM	CED	BW	WW	YW	ADG	DMI	M	ME
104	73	31	9	-1.5	61	99	0.24	1.64	28	4
32%	17%	65%	90%	57%	50%	46%	42%	68%	27%	53%
HPG	CEM	STAY	MARB	YG	CW	REA	FAT			
9	6	20	0.53	0.17	15	0.1	0.07			
85%	74%	5%	25%	93%	81%	56%	99%			

A bull that has the looks of his sire. Moderate in size, wide bodied and thick throughout. We purchased his dam from Cargo Stock Farm at the ND Red Select sale as a bred heifer a couple years back and sold a maternal sister to 2153K as an open heifer in last year's Red Select sale.

32 WSM ULTIMATUM 2200K

BULL DOB: 05/04/22 REG: 4626893 100% AR CAT A

ACT BW: 102 ADJ WW: 685

5L ULTIMATUM 1893-03C | 5L BOURNE 117-48A
5L PRETTY GUN 1300-1893

5L ULTIMATUM 857-284F

5L MATTIE 1693-857 | 5L SIGNATURE 5615
5L MATTIE X708-1693

PFFR POWER DEAL 428

BADLANDS OPPORTUNITY 53Y
PFFR MS 7006T-18Y

WSM DORSEY 896F

WSM DORSEY 103Y | BROWN COMMITMENT S7206
WASEM DORSEY 903W



PROS	HB	GM	CED	BW	WW	YW	ADG	DMI	M	ME
95	33	62	6	4.9	89	147	0.36	1.96	23	10
46%	87%	11%	99%	99%	1%	1%	1%	91%	74%	88%
HPG	CEM	STAY	MARB	YG	CW	REA	FAT			
11	1	15	0.67	0.04	31	0.32	0.02			
61%	99%	51%	9%	35%	21%	15%	53%			

This guy flat out did it in the growth category. Top 1% for both WW and YW in the breed. Dark red, super thick made, moderate cow bull that will add pounds at weaning time and in the feed yard.

33 WSM QUARTERBACK 2006K

BULL DOB: 03/10/22 REG: 4627021 100% AR CAT A

ACT BW: 66 ADJ WW: 693

PIE STOCKMAN 4051 | LSF SAGA 1040Y
PIE LAKOTA 046

PIE QUARTERBACK 789

PIE RUBY 520 | PIE ONE OF A KIND 352
PIE RUBY 381

WFL PROFITMAKER E7030

WFL MERLIN 018A
WFL PROSPECT

WSM 018H

WSM MISS BANKER 816F | RED BAR-E-L LOOKIN COOL 164D
WSM MISS BANKER 458B



PROS	HB	GM	CED	BW	WW	YW	ADG	DMI	M	ME
87	31	55	16	-6.7	61	97	0.23	1.54	35	6
60%	89%	18%	9%	1%	50%	50%	49%	58%	1%	64%
HPG	CEM	STAY	MARB	YG	CW	REA	FAT			
10	8	12	0.61	-0.05	23	0.34	0			
68%	29%	83%	15%	7%	50%	13%	14%			

Here is another, what I call "unique", matings, as we don't have too many Profitmaker daughters. A sure shot heifer bull with calving ease and performance both top and bottom of the pedigree. This guy has some extra length and tons of middle to him.



34 WSM QUARTERBACK 2054K

BULL DOB: 03/18/22 REG: 4626793 100% AR CAT A

ACT BW: 91 ADJ WW: 690

PIE STOCKMAN 4051 LSF SAGA 1040Y
 PIE LAKOTA 046
PIE QUARTERBACK 789
 PIE RUBY 520 PIE ONE OF A KIND 352
 PIE RUBY 381
 BHR BANKER 142 TNTS BANK STATEMENT T272
 MISS BHR CHAPTER ONE 637
WSM 348A
 WSM RACHEL 118Y 5L NORSEMAN KING 2291
 DR 438 RACHEL T48

PROS	HB	GM	CED	BW	WW	YW	ADG	DMI	M	ME
108	36	72	15	-3.2	66	110	0.28	1.57	31	6
26%	83%	4%	25%	25%	29%	23%	18%	60%	8%	66%
HPG	CEM	STAY	MARB	YG	CW	REA	FAT			
11	8	12	0.78	0.01	27	0.29	0.01			
55%	35%	82%	4%	24%	33%	19%	37%			

If it seems I'm repeating the long made with the Quarterback sons, I am, because they are just that. Length of cattle is something not easy to come by and is a sure shot way to add pounds.



35 WSM QUARTERBACK 2005K

BULL DOB: 03/09/22 REG: 4626885 100% AR CAT A

ACT BW: 80 ADJ WW: 600

PIE STOCKMAN 4051 LSF SAGA 1040Y
 PIE LAKOTA 046
PIE QUARTERBACK 789
 PIE RUBY 520 PIE ONE OF A KIND 352
 PIE RUBY 381
 ANDRAS FUSION R236 ANDRAS IN FOCUS B175
 ANDRAS BELLE B167
WSM FOREVER EPIC 705E
 WSM FOREVER EPIC 573C CRUMP FOREVER RED 324
 WSM MISS EPIC 315A

PROS	HB	GM	CED	BW	WW	YW	ADG	DMI	M	ME
121	48	73	18	-5.3	63	110	0.29	1.58	31	10
12%	64%	4%	4%	5%	41%	23%	10%	61%	8%	85%
HPG	CEM	STAY	MARB	YG	CW	REA	FAT			
10	10	15	0.79	0.04	24	0.18	0.01			
79%	6%	57%	3%	34%	48%	39%	38%			

Here is another outstanding Quarterback son that is hard to fault both phenotypically and on paper. We sold a full brother to 2005K to Nordlund Stock Farm in MN in our 2021 sale and they have nothing but good to say about what he is doing for them.



36 WSM SENECA 2115K

BULL DOB: 03/24/22 REG: 4627041

75% AR 22.9% SM 2.1% XX CAT 3

ACT BW: 87 ADJ WW: 646

BIEBER ROLLIN DEEP Y118 BIEBER ROOSEVELT W384
 BIEBER TILLY 399W
RREDS SENECA 731C
 RREDS ASTER 309A BECKTON EPIC R397 K
 MLK CRK ASTER 175
 LJC MISSION STATEMENT P27 LJC LANCER 806
 LJC HANNAH 106
WSM RED ROCK 562C
 LRS MS RED ROCK 654S KS RED ROCK P215
 LRS MS REDMACKFRID 776G

PROS	HB	GM	CED	BW	WW	YW	ADG	DMI	M	ME
60	56	4	10	-2.6	54	80	0.16	1.58	21	0
92%	48%	97%	85%	35%	73%	82%	88%	61%	89%	33%
HPG	CEM	STAY	MARB	YG	CW	REA	FAT			
10	6	16	0.17	-0.04	18	0.36	0.02			
77%	77%	35%	96%	9%	72%	12%	46%			

Another Simmental X bull that is no slouch. Thick deep sided and wide made from the ground up best describes this bull. He also stems back to a heck of a cow that came out of the Lassle Simmental program when they dispersed their red cows. Keep the daughters out of this bull!

37 WSM EPIC 2128K

BULL DOB: 03/27/22 REG: 4626775 100% AR CAT A

ACT BW: 78 ADJ WW: 634

BECKTON EPIC R397 K | BECKTON EPIC K F075
BECKTON KIT F468 JL

WSM EPIC 329A

EURA VANNA 802 | OHRR 142 MR RED HAWK 204S
OHRR 47N COPPER VANNA 12S

BIEBER XCEPTION 10083 | BUF CRK ROMEO L081
BIEBER MINERVA 9141

801U WSM

MESSMER GINNIE 233N | LEACHMAN END CUT 1383G
MESSMER GINNIE 9441



PROS	HB	GM	CED	BW	WW	YW	ADG	DMI	M	ME
147	95	52	14	-3.3	52	84	0.2	0	18	0
2%	2%	23%	31%	24%	78%	77%	72%	1%	97%	32%
HPG	CEM	STAY	MARB	YG	CW	REA	FAT			
3	11	18	0.39	0.03	13	0.16	0.03			
98%	3%	21%	55%	32%	84%	43%	67%			

The last Epic 329 bulls we will have in our offering. This cow just doesn't miss and brings in a good one every year. If you are looking for something functional that will last the test of time, here he is. We used his sire until he was 8 years old, and his dam is coming with her 13th calf this spring and she's had no special treatment.

38 WSM SENECA 2050K

BULL DOB: 03/17/22 REG: 4626837 100% AR CAT A

ACT BW: 94 ADJ WW: 657

BIEBER ROLLIN DEEP Y118 | BIEBER ROOSEVELT W384
BIEBER TILLY 399W

RREDS SENECA 731C

RREDS ASTER 309A | BECKTON EPIC R397 K
MLK CRK ASTER 175

BHR BANKER 142 | TNTS BANK STATEMENT T272

WSM CONNIE 6109D

MS CONNIE OF 4L 15S | MISS BHR CHAPTER ONE 637
4L 323 CONTINUANCE R59N
ANDRAS MELVA 399



PROS	HB	GM	CED	BW	WW	YW	ADG	DMI	M	ME
94	81	14	11	-1.1	68	104	0.22	1.61	19	3
47%	9%	92%	76%	65%	22%	35%	54%	64%	94%	47%
HPG	CEM	STAY	MARB	YG	CW	REA	FAT			
10	6	20	0.28	0.19	26	0.1	0.06			
74%	67%	4%	82%	97%	41%	56%	99%			

Another good Seneca calf that is wide from top to bottom and full of red meat.

39 WSM SENECA 2108K

BULL DOB: 03/22/22 REG: 4692039 100% AR CAT A

ACT BW: 82 ADJ WW: 640

BIEBER ROLLIN DEEP Y118 | BIEBER ROOSEVELT W384
BIEBER TILLY 399W

RREDS SENECA 731C

RREDS ASTER 309A | BECKTON EPIC R397 K
MLK CRK ASTER 175

BIEBER ROUGH RIDER 10712 | BASIN TREND SETTER 6074

BIEBER BELGA 345X

OLC BELGA R408 | BIEBER ADELLE 8958
OLC VALOR N131
OLC BELGA L407



PROS	HB	GM	CED	BW	WW	YW	ADG	DMI	M	ME
90	95	-4	14	-2.1	63	100	0.23	1.69	25	0
54%	2%	99%	38%	44%	41%	43%	46%	73%	54%	29%
HPG	CEM	STAY	MARB	YG	CW	REA	FAT			
13	9	19	0.01	0.14	26	0.26	0.06			
21%	21%	7%	99%	87%	41%	24%	99%			

A product of some embryos we purchased from Twedt Rd Angus a couple of years ago. He is consistent with the rest of the Seneca sons in the sale and shows us how consistent he is across the breed. This guy is super thick thought and tons of middle just like his brothers.



40 WSM FORERUNNER 2152K

BULL DOB: 04/07/22 REG: 4627031 100% AR CAT A

ACT BW: 88 ADJ WW: 727

CRUMP FORERUNNER 6601 CRUMP PACESETTER 491
MDM SUSIE 133-9

WSM FORERUNNER 9158G

BIEBER PRIMROSE 107W

PELTON WIDELOAD 78B

WSM 022H

NSFR MTX F78

BASIN HOBO 0545
BASIN PRIMROSE 24T9
SLGN WIDELOAD 920W
PELTON MISS JAYLA 0508S
BAR M SUN KING 5045
NSFR MTX C241

PROS	HB	GM	CED	BW	WW	YW	ADG	DMI	M	ME
99	57	42	14	-2.3	71	115	0.27	1.63	30	4
39%	45%	41%	26%	41%	15%	16%	19%	67%	12%	53%
HPG	CEM	STAY	MARB	YG	CW	REA	FAT			
9	8	16	0.48	0.14	28	-0.05	0.02			
91%	26%	45%	34%	86%	33%	86%	47%			

This dark cherry red bull is also owned by our daughter Kacee. He traces back to the Bieber Primrose 107W line, with his sire being one of the first offspring we received from Primrose. This stout, deep ribbed bull has enough balance and performance to be a great addition to anyone's herd.



41 WSM ENTERPRISE 2086K

BULL DOB: 03/20/22 REG: 4626875 100% AR CAT A

ACT BW: 80 ADJ WW: 635

9 MILE FRANCHISE 6305 SPUR FRANCHISE OF GARTON
C-BAR ABIGRACE Y11

9 MILE ENTERPRISE 8180

DYK RED BIRD 1944-5105

PFFR POWER DEAL 428

WSM RACHEL 744E

WSM RACHEL 204Z

GMRA DEUCES 2222
5L BLACKBIRD 1322-1944
BADLANDS OPPORTUNITY 53Y
PFFR MS 7006T-18Y
5L NORSEMAN KING 2291
DR 438 RACHEL T48

PROS	HB	GM	CED	BW	WW	YW	ADG	DMI	M	ME
97	49	48	12	-3.1	52	88	0.22	1.87	33	9
43%	62%	30%	55%	26%	79%	70%	56%	86%	4%	81%
HPG	CEM	STAY	MARB	YG	CW	REA	FAT			
11	6	16	0.62	-0.03	18	0.36	0.02			
49%	64%	39%	14%	12%	71%	12%	55%			

A well balanced bull on paper and when you lay eyes on him. Smooth shouldered and clean fronted with plenty of muscle and thickness.



42 WSM FRANCHISE 2103K

BULL DOB: 03/23/22 REG: 4627509 100% AR CAT A

ACT BW: 87 ADJ WW: 575

SPUR FRANCHISE OF GARTON SPUR FRANCHISE 7070
H & H IRENE LASS 0135

9 MILE FRANCHISE 6305

C-BAR ABIGRACE Y11

BASIN HOBO 0545

BIEBER PRIMROSE 107W

BASIN PRIMROSE 24T9

TR COLT 45 UT806
C-BAR & BROWN ABIGRACE T712
BASIN HOBO 79E
BASIN ERICA 330E
BASIN TREND SETTER 6074
BASIN PRIMROSE 2043

PROS	HB	GM	CED	BW	WW	YW	ADG	DMI	M	ME
127	85	42	16	-4.2	63	103	0.26	1.76	33	0
8%	6%	42%	15%	12%	42%	36%	30%	78%	4%	33%
HPG	CEM	STAY	MARB	YG	CW	REA	FAT			
10	10	19	0.44	-0.04	23	0.56	0.03			
82%	4%	11%	43%	10%	50%	2%	81%			

The only bull from the Franchise 6305 x Primrose 107W flush. 2103K has the heifer bull look to him and his numbers verify he is a sleep all night heifer bull.

43 WSM QUARTERBACK 2027K

BULL DOB: 03/15/22 REG: 4627007 100% AR CAT A

ACT BW: 75 ADJ WW: 651

PIE STOCKMAN 4051 LSF SAGA 1040Y
 PIE QUARTERBACK 789 PIE LAKOTA 046
 PIE RUBY 520 PIE ONE OF A KIND 352
 BECKTON DOMINOR T122 Z1
 3SCC DOMAIN A163 3SCC EUCLA X723
 WSM 086H LJC MISSION STATEMENT P27
 WSM MS BRONTE 535C 805U WSM



PROS	HB	GM	CED	BW	WW	YW	ADG	DMI	M	ME
107	39	68	19	-4.8	60	105	0.28	1.65	31	10
27%	79%	6%	1%	8%	52%	34%	16%	69%	10%	86%
HPG	CEM	STAY	MARB	YG	CW	REA	FAT			
10	9	15	0.85	0.09	20	0.14	0.04			
74%	15%	60%	2%	64%	64%	47%	84%			

Another sure shot calving ease bull with Quarterback 789 on top and Domain A163 on the bottom. Top 1% of the breed for CED.

44 WSM QUARTERBACK 2093K

BULL DOB: 03/21/22 REG: 4627499 100% AR CAT A

ACT BW: 87 ADJ WW: 628

PIE STOCKMAN 4051 LSF SAGA 1040Y
 PIE QUARTERBACK 789 PIE LAKOTA 046
 PIE RUBY 520 PIE ONE OF A KIND 352
 PIE RUBY 381
 BASIN HOBO 0545 BASIN HOBO 79E
 BASIN ERICA 330E
 BIEBER PRIMROSE 107W BASIN TREND SETTER 6074
 BASIN PRIMROSE 24T9 BASIN PRIMROSE 2043



PROS	HB	GM	CED	BW	WW	YW	ADG	DMI	M	ME
130	92	38	16	-4.8	51	81	0.19	1.66	31	6
7%	3%	49%	12%	8%	83%	81%	75%	70%	8%	69%
HPG	CEM	STAY	MARB	YG	CW	REA	FAT			
11	8	23	0.66	0.02	10	0.16	0.03			
66%	24%	1%	10%	27%	91%	43%	71%			

The fourth and final brother. What, who made this sale order? Here is your last chance to tap into a phenomenal line that will move any herd forward.

45 WSM SENECA 2070K

BULL DOB: 03/19/22 REG: 4626919 100% AR CAT A

ACT BW: 79 ADJ WW: 597

BIEBER ROLLIN DEEP Y118 BIEBER ROOSEVELT W384
 RREDS SENECA 731C BIEBER TILLY 399W
 RREDS ASTER 309A BECKTON EPIC R397 K
 MLK CRK ASTER 175
 CRUMP FOREVER RED 324 BIEBER H HUGHES W109
 HAT RANCH AMBER 128
 WSM FOREVER RACHEL 8118F PFFR POWER DEAL 428
 WSM RACHEL 696D WSM RACHEL 365A



PROS	HB	GM	CED	BW	WW	YW	ADG	DMI	M	ME
101	96	6	15	-3.6	58	90	0.2	1.7	22	5
35%	2%	97%	24%	19%	59%	66%	72%	73%	80%	62%
HPG	CEM	STAY	MARB	YG	CW	REA	FAT			
12	10	21	0.28	0.18	17	-0.04	0.05			
47%	8%	1%	82%	95%	74%	86%	97%			

A dark red bull with some added length and a heifer bull prospect for sure. The Forever Red 324 bull has left his mark in our herd with some outstanding females.



46 WSM SENECA 2081K

BULL DOB: 03/20/22 REG: 4626829 100% AR CAT A

ACT BW: 82 ADJ WW: 609

BIEBER ROLLIN DEEP Y118 BIEBER ROOSEVELT W384
BIEBER TILLY 399W

RREDS SENECA 731C

RREDS ASTER 309A

LJC MISSION STATEMENT P27

WSM MS GINNIE 569C

105Y WSM

BECKTON EPIC R397 K
MLK CRK ASTER 175

LJC LANCER 806
LJC HANNAH 106

5L NORSEMAN KING 2291
801U WSM

PROS	HB	GM	CED	BW	WW	YW	ADG	DMI	M	ME
82	65	17	14	-1.3	66	108	0.26	1.86	22	8
68%	30%	88%	36%	60%	30%	26%	24%	86%	84%	76%
HPG	CEM	STAY	MARB	YG	CW	REA	FAT			
11	8	17	0.27	0.03	18	0.31	0.04			
63%	22%	26%	84%	32%	72%	17%	87%			

A clean fronted Seneca that is soggy and has some added length. Comes from a cow line that has impressed us for 4 generations.



47 WSM SENECA 2057K

BULL DOB: 03/18/22 REG: 4626861 100% AR CAT A

ACT BW: 83 ADJ WW: 660

BIEBER ROLLIN DEEP Y118 BIEBER ROOSEVELT W384
BIEBER TILLY 399W

RREDS SENECA 731C

RREDS ASTER 309A

LSF SRR IMPECCABLE 3150A

WSM MISS NEBULA 642D

MISS BHR NEBULA 7208 419

BECKTON EPIC R397 K
MLK CRK ASTER 175

LSF SAGA 1040Y
LSF CRYSTAL W9231 Y1019

LSF RAB P707 Y7208
MISS BHR DRIFTER 2171

PROS	HB	GM	CED	BW	WW	YW	ADG	DMI	M	ME
97	65	31	16	-5.6	54	85	0.19	1.69	25	5
43%	29%	63%	11%	4%	74%	75%	73%	72%	57%	59%
HPG	CEM	STAY	MARB	YG	CW	REA	FAT			
10	9	17	0.39	0.18	31	0.19	0.06			
68%	17%	22%	55%	96%	21%	37%	99%			

Another soggy bull that will add pounds at weaning time.



48 WSM QUARTERBACK 2170K

BULL DOB: 04/11/22 REG: 4626827 100% AR CAT A

ACT BW: 96 ADJ WW: 607

PIE QUARTERBACK 789 PIE STOCKMAN 4051
PIE RUBY 520

WSM QUARTERBACK 060H

WSM RACHEL 204Z

BHR BANKER 142

WSM B PANDORA 591C

WSM PANDORA 210Z

5L NORSEMAN KING 2291
DR 438 RACHEL T48

TNTS BANK STATEMENT T272
MISS BHR CHAPTER ONE 637

5L NORSEMAN KING 2291
803U WSM

PROS	HB	GM	CED	BW	WW	YW	ADG	DMI	M	ME
102	73	29	12	-2.6	53	84	0.19	1.41	26	3
34%	17%	69%	64%	35%	77%	76%	73%	46%	42%	46%
HPG	CEM	STAY	MARB	YG	CW	REA	FAT			
9	7	20	0.34	-0.05	17	0.37	0.01			
89%	57%	5%	68%	8%	75%	11%	44%			

A solid Quarterback 060H son and the only one in the sale. The Pandora line of cows has been one that excels for great structure and doability.

49 WSM WENTYARD 2008K

BULL DOB: 03/12/22 REG: 4626931
99.9% AR 0.1% XX CAT B
ACT BW: 85 ADJ WW: 597

9 MILE FRANCHISE 6305
9 MILE WENT YARD 0700

RAISLAND ESTHER 140-1038

PIE JUST RIGHT 540

WSM 948G

WASEM LIZZY 010X

SPUR FRANCHISE OF GARTON
C-BAR ABIGRACE Y11

ANGELO HEAVEN'S CUB 8073
CFLD ESTHER 463 1038

PIE THE COWBOY KIND 343
RAISLAND LAKOTA 311-158

LELAND DESTINY 7023T
MESSMER LIZZY M80



PROS	HB	GM	CED	BW	WW	YW	ADG	DMI	M	ME
83	65	18	11	-2.5	60	97	0.23	1.8	31	5
67%	30%	87%	72%	37%	52%	50%	47%	81%	7%	64%
HPG	CEM	STAY	MARB	YG	CW	REA	FAT			
8	8	18	0.37	0.12	15	0.06	0.04			
96%	39%	13%	61%	78%	79%	66%	92%			

A bull that has some stretch to him. Teamed up with Just Right 540, the mating options are endless.

50 WSM WENTYARD 2038K

BULL DOB: 03/16/22 REG: 4626917 100% AR CAT A
ACT BW: 67 ADJ WW: 637

9 MILE FRANCHISE 6305
9 MILE WENT YARD 0700

RAISLAND ESTHER 140-1038

CRUMP FOREVER RED 324

WSM PANDORA 886F

WSM PANDORA 698D

SPUR FRANCHISE OF GARTON
C-BAR ABIGRACE Y11

ANGELO HEAVEN'S CUB 8073
CFLD ESTHER 463 1038

BIEBER H HUGHES W109
HAT RANCH AMBER 128

PFFR POWER DEAL 428
WSM PANDORA 210Z



PROS	HB	GM	CED	BW	WW	YW	ADG	DMI	M	ME
114	80	34	18	-4.1	64	110	0.29	1.81	32	9
18%	9%	58%	2%	14%	37%	22%	12%	82%	6%	81%
HPG	CEM	STAY	MARB	YG	CW	REA	FAT			
10	13	18	0.32	0	22	0.55	0.05			
74%	1%	13%	73%	18%	55%	3%	95%			

Went Yard son is calving ease specialist along with having some pretty impressive growth as well. Use him on heifers without giving up performance.

51 WSM ULTIMATUM 2172K

BULL DOB: 04/12/22 REG: 4626859 100% AR CAT A
ACT BW: 80 ADJ WW: 610

5L ULTIMATUM 1893-03C
5L ULTIMATUM 857-284F

5L MATTIE 1693-857

PFFR POWER DEAL 428

WSM DORSEY POWER 688D

WSM MISS BANKER 338A

5L BOURNE 117-48A
5L PRETTY GUN 1300-1893

5L SIGNATURE 5615
5L MATTIE X708-1693

BADLANDS OPPORTUNITY 53Y
PFFR MS 7006T-18Y

BHR BANKER 142
WSM DORSEY 101Y



PROS	HB	GM	CED	BW	WW	YW	ADG	DMI	M	ME
55	41	14	12	-3.5	56	83	0.17	2.05	27	12
95%	76%	91%	57%	21%	68%	78%	84%	94%	32%	92%
HPG	CEM	STAY	MARB	YG	CW	REA	FAT			
12	7	15	0.53	0.03	9	0.29	0.05			
47%	50%	57%	25%	29%	92%	19%	94%			

The Ultimatum cattle are known for their moderate frame. This dark red fella is just that. If you want to downsize some big cows, you can do it in one generation with these guys.

52 WSM ENSURE 2149K

BULL DOB: 04/06/22 REG: 4626889 100% AR CAT A

ACT BW: 88 ADJ WW: 657

VGW CINCH 503 | ANDRAS FUSION R236
VGW SS-STAR 1348

BAR M ENSURE 0114

BAR M MS RIDIN RED 0187

RED BAR-E-L CITIZEN 127C

WSM RACHEL 806F

WASEM RACHEL 004X

5L RIDIN RED 196-334V
MISS BHR LOGAN 727
RED U-2 JUSTIFIED 235Z
RED WRAZ CHER 21Y

BAR R SPRING VACATION R13
DR 438 RACHEL T48

PROS	HB	GM	CED	BW	WW	YW	ADG	DMI	M	ME
59	57	2	15	-1.6	59	90	0.2	1.62	27	3
93%	46%	98%	25%	55%	58%	66%	73%	65%	39%	51%
HPG	CEM	STAY	MARB	YG	CW	REA	FAT			
11	9	15	0.32	-0.01	2	0	0.01			
55%	21%	53%	73%	17%	98%	78%	31%			



A half brother to Lot 10. A super thick made bull and full of red meat. Notice how deep he carries his muscle into his lower hind quarters. He will surely add some weight to a set of feeders.

53 WSM QUARTERBACK 2095K

BULL DOB: 03/21/22 REG: 4627053

87.5% AR 11.4% SM 1.1% XX CAT B

ACT BW: 75 ADJ WW: 566

PIE STOCKMAN 4051 | LSF SAGA 1040Y

PIE LAKOTA 046

PIE QUARTERBACK 789

PIE RUBY 520

PIE JUST RIGHT 540

WSM RED ROCK 082H

WSM RED ROCK 562C

PIE ONE OF A KIND 352
PIE RUBY 381

PIE THE COWBOY KIND 343

RAISLAND LAKOTA 311-158

LJC MISSION STATEMENT P27

LRS MS RED ROCK 654S

PROS	HB	GM	CED	BW	WW	YW	ADG	DMI	M	ME
106	52	54	15	-3.7	53	89	0.22	1.66	29	6
29%	56%	20%	23%	18%	76%	67%	53%	70%	20%	70%
HPG	CEM	STAY	MARB	YG	CW	REA	FAT			
10	8	16	0.75	-0.08	11	0.34	0.01			
76%	29%	41%	5%	4%	90%	13%	31%			



Out of a first calf heifer that is also a percentage Simmental. He ranks towards the top of the breed in the calving ease and carcass traits.

54 WSM SENECA 2028K

BULL DOB: 03/15/22 REG: 4627043 100% AR CAT A

ACT BW: 73 ADJ WW: 589

BIEBER ROLLIN DEEP Y118 | BIEBER ROOSEVELT W384

BIEBER TILLY 399W

RREDS SENECA 731C

RREDS ASTER 309A

PIE THE COWBOY KIND 343

WSM 925G

WSM MISS BANKER 603D

BUF CRK THE RIGHT KIND U199

PIE CASCADE 561

BROWN JYJ REDEMPTION Y1334

WSM MISS BANKER 457B

PROS	HB	GM	CED	BW	WW	YW	ADG	DMI	M	ME
101	67	34	12	-2	66	105	0.24	1.64	20	0
36%	27%	57%	63%	47%	30%	34%	40%	68%	90%	29%
HPG	CEM	STAY	MARB	YG	CW	REA	FAT			
10	6	17	0.29	0.11	37	0.2	0.02			
70%	67%	27%	80%	75%	9%	34%	64%			



Another calf stamped by Seneca. Big middled and super soggy.

55 WSM FRANCHISE 2082K

BULL DOB: 03/20/22 REG: 4626989 100% AR CAT A

ACT BW: 81 ADJ WW: 603

SPUR FRANCHISE OF GARTON
9 MILE FRANCHISE 6305
C-BAR ABIGRACE Y11

SPUR FRANCHISE 7070
H & H IRENE LASS 0135
TR COLT 45 UT806
C-BAR & BROWN ABIGRACE T712
RED BAR-E-L BOOSTER 147B
BAR-E-L OROCUS 165W
BHR BANKER 142
WSM NATIE 113Y

RED BAR-E-L LOOKIN COOL 164D
WSM 0172H
WMS MISS BANKER 343A

PROS	HB	GM	CED	BW	WW	YW	ADG	DMI	M	ME
109	38	70	9	0.5	71	120	0.31	1.84	29	1
25%	80%	5%	91%	88%	15%	9%	6%	84%	17%	39%
HPG	CEM	STAY	MARB	YG	CW	REA	FAT			
10	6	12	0.46	0.03	50	0.53	0.01			
72%	74%	81%	39%	29%	1%	3%	33%			



A thick made calf out of a first calver that rises to the top of the breed in growth and carcass.

56 WSM ENTERPRISE 2055K

BULL DOB: 03/18/22 REG: 4626803 100% AR CAT A

ACT BW: 71 ADJ WW: 560

9 MILE FRANCHISE 6305
9 MILE ENTERPRISE 8180
DYK RED BIRD 1944-5105

SPUR FRANCHISE OF GARTON
C-BAR ABIGRACE Y11
GMRA DEUCES 2222
5L BLACKBIRD 1322-1944
RED LAZY R C DROVER 133S
RED SSS LYDA 604P
BHR PACKER 92
MISS BHR BANKER 9134

RED SSS DRIFTER 327W
MISS BHR DRIFTER 4143
MISS BHR PACKER 1200

PROS	HB	GM	CED	BW	WW	YW	ADG	DMI	M	ME
89	59	31	14	-5.1	43	78	0.22	1.38	30	4
55%	42%	65%	30%	6%	94%	85%	56%	42%	16%	53%
HPG	CEM	STAY	MARB	YG	CW	REA	FAT			
11	8	17	0.41	0.12	9	-0.1	0.03			
59%	29%	31%	50%	79%	92%	92%	82%			



We purchased 2055K's dam from Broken Heart Ranch as a bred heifer some years back and this is the first bull calf she has given us. He is a heifer bull prospect as well.

57 WSM COMMITMENT 2178K

BULL DOB: 04/15/22 REG: 4626897 100% AR CAT A

ACT BW: 88 ADJ WW: 588

HRR CONFEDERATE 051
SMJ ULTIMATE COMMITMENT D298
SMJ DOLLY DAY COMMIT Y297

MLK CRK KNIGHT 7153
JACOBSON REBALS 7015
BROWN COMMITMENT S7206
SMJ DAY DOLLY R267
BUF CRK THE RIGHT KIND U199
PIE CASCADE 561
LEAND SAKIC 33X
WASEM RACHEL 004X

PIE THE COWBOY KIND 343
WSM RACHEL 848F
WSM RACHEL 365A

PROS	HB	GM	CED	BW	WW	YW	ADG	DMI	M	ME
98	82	16	11	-1.8	52	78	0.16	1.4	28	5
41%	8%	89%	78%	50%	80%	84%	87%	45%	30%	60%
HPG	CEM	STAY	MARB	YG	CW	REA	FAT			
9	7	21	0.43	0.01	6	-0.12	0			
83%	57%	1%	45%	24%	96%	94%	9%			



We ran some cows with a neighbor and had only one cow in the bunch that didn't stick AI and here he is. A bull out of a Cowboy Kind daughter that has some stretch to him.



58 WSM QUARTERBACK 2011K

BULL DOB: 03/12/22 REG: 4626993 100% AR CAT A

ACT BW: 70 ADJ WW: 596

PIE STOCKMAN 4051 LSF SAGA 1040Y
 PIE LAKOTA 046
PIE QUARTERBACK 789
 PIE RUBY 520 PIE ONE OF A KIND 352
 PIE RUBY 381
 PIE THE COWBOY KIND 343 BUF CRK THE RIGHT KIND U199
WSM 003H PIE CASCADE 561
 WSM FORGIVEN PRINCESS 408B BROWN JYJ REDEMPTION Y1334
 WSM PRINCESS 202Z

PROS	HB	GM	CED	BW	WW	YW	ADG	DMI	M	ME
114	28	86	16	-3.7	66	121	0.34	1.86	29	12
19%	92%	1%	13%	18%	29%	9%	2%	85%	19%	92%
HPG	CEM	STAY	MARB	YG	CW	REA	FAT			
10	8	13	0.74	0.01	37	0.17	-0.02			
76%	29%	80%	5%	22%	10%	40%	2%			

Wow, what a soggy little bugger. Wide based all the way to the top and is in the top of the breed for calving ease and growth.



59 WSM FORERUNNER 2134K

BULL DOB: 03/30/22 REG: 4627015 100% AR CAT A

ACT BW: 72 ADJ WW: 686

CRUMP PACESETTER 491
 CRUMP FORERUNNER 6601 MDM SUSIE 133-9
WSM FORERUNNER 9158G
 BIEBER PRIMROSE 107W BASIN HOBO 0545
 BASIN PRIMROSE 24T9
 3SCC DOMAIN A163 BECKTON DOMINOR T122 Z1
 3SCC EUCLA X723
WSM 021H
 WSM RACHEL 744E PFFR POWER DEAL 428
 WSM RACHEL 204Z

PROS	HB	GM	CED	BW	WW	YW	ADG	DMI	M	ME
98	59	39	15	-2.6	71	111	0.25	1.77	28	4
42%	42%	48%	25%	35%	15%	22%	34%	79%	30%	56%
HPG	CEM	STAY	MARB	YG	CW	REA	FAT			
9	8	16	0.57	0.12	24	0.2	0.05			
90%	37%	35%	19%	77%	46%	34%	94%			

A Forerunner out of a Domain cow says sleep all night calving ease. This guy has a pretty impressive set of growth numbers to go along with it and he's out of a first calver.



60 WSM WENT YARD 2136K

BULL DOB: 04/01/22 REG: 4627009 100% AR CAT A

ACT BW: 62 ADJ WW: 664

SPUR FRANCHISE OF GARTON
 9 MILE FRANCHISE 6305 C-BAR ABIGRACE Y11
9 MILE WENT YARD 0700
 RAISLAND ESTHER 140-1038 ANGELO HEAVEN'S CUB 8073
 CFLD ESTHER 463 1038
 PIE QUARTERBACK 789 PIE STOCKMAN 4051
 PIE RUBY 520
WSM 011H
 WSM VANNA 615D 5L NORSEMAN KING 2291
 001X WSM

PROS	HB	GM	CED	BW	WW	YW	ADG	DMI	M	ME
93	75	18	18	-6.7	60	96	0.23	1.88	36	10
49%	14%	87%	4%	1%	52%	52%	52%	87%	1%	87%
HPG	CEM	STAY	MARB	YG	CW	REA	FAT			
9	12	19	0.41	-0.06	8	0.44	0.04			
87%	1%	9%	50%	7%	94%	6%	84%			

A calving ease specialist and sleep all night heifer bull out of a first time Quarterback 789 heifer.

61 WSM SENECA 2013K

BULL DOB: 03/13/22 REG: 4626951 100% AR CAT A

ACT BW: 77 ADJ WW: 647

BIEBER ROLLIN DEEP Y118 BIEBER ROOSEVELT W384
BIEBER TILLY 399W

RREDS SENECA 731C

RREDS ASTER 309A BECKTON EPIC R397 K
MLK CRK ASTER 175

WSM EPIC 329A BECKTON EPIC R397 K
EURVA VANNA 802

WSM 9119G

WSM FOREVER EPIC 573C CRUMP FOREVER RED 324
WSM MISS EPIC 315A



PROS	HB	GM	CED	BW	WW	YW	ADG	DMI	M	ME
99	72	26	13	-1.3	65	102	0.23	1.64	22	6
40%	18%	73%	51%	60%	34%	40%	49%	68%	83%	70%
HPG	CEM	STAY	MARB	YG	CW	REA	FAT			
10	8	19	0.38	0.17	27	0.35	0.08			
82%	26%	11%	58%	94%	37%	12%	99%			

Super thick , dark red and deep flanked out of Seneca 731c. The consistency of this sire group is outstanding.

62 WSM SENECA 2040K

BULL DOB: 03/16/22 REG: 4626857

99.9% AR 0.1% XX CAT B

ACT BW: 71 ADJ WW: 564

BIEBER ROLLIN DEEP Y118 BIEBER ROOSEVELT W384
BIEBER TILLY 399W

RREDS SENECA 731C

RREDS ASTER 309A BECKTON EPIC R397 K
MLK CRK ASTER 175

BHR BANKER 142 TNTS BANK STATEMENT T272
MISS BHR CHAPTER ONE 637

WSM DEXAN 672D

WSM DEXAN 349A LEAND SAKIC 33X
WASEM DEXAN 011X



PROS	HB	GM	CED	BW	WW	YW	ADG	DMI	M	ME
27	56	-29	11	-0.1	71	105	0.21	1.67	22	4
99%	47%	99%	76%	81%	15%	33%	62%	71%	79%	53%
HPG	CEM	STAY	MARB	YG	CW	REA	FAT			
11	6	16	-0.15	0.06	22	0.24	0.03			
65%	70%	45%	99%	50%	53%	27%	82%			

Here is your last chance of the day to latch onto a Seneca son.

63 WSM ULTIMATUM 2143K

BULL DOB: 04/04/22 REG: 4626809 100% AR CAT A

ACT BW: 76 ADJ WW: 557

5L ULTIMATUM 1893-03C 5L BOURNE 117-48A
5L PRETTY GUN 1300-1893

5L ULTIMATUM 857-284F

5L MATTIE 1693-857 5L SIGNATURE 5615
5L MATTIE X708-1693

BHR BANKER 142 TNTS BANK STATEMENT T272
MISS BHR CHAPTER ONE 637

WSM MISS BANKER 461B

WSM DORSEY 103Y BROWN COMMITMENT S7206
WASEM DORSEY 903W



PROS	HB	GM	CED	BW	WW	YW	ADG	DMI	M	ME
101	74	27	15	-3	61	101	0.25	1.63	20	3
35%	16%	72%	24%	28%	49%	42%	35%	67%	91%	51%
HPG	CEM	STAY	MARB	YG	CW	REA	FAT			
11	8	18	0.52	0.14	10	-0.04	0.05			
57%	29%	13%	27%	87%	91%	86%	96%			

A super stout moderate son of Ultimatum that has plenty of length to boot.

BRED HEIFERS

For the last few years, we have sold our later calving heifers. These heifers spent last winter and most of the summer at a feedlot in the eastern part of the state. We brought them home the end of August and went to grass with them here. All of these heifers have been recently poured, wormed and verified pregnant. Buy with confidence, as there are many top notch females here. All heifers are bred to our service sire 9 Mile Went Yard 0700.



64 WSM 1087J

DOB: 03-06-2021 REG: 4468127

ACT BW: **92** ADJ WW: **615**

SLGN WIDELoad 920W | UBAR HIGH CAPACITY 224
MEADO-WEST PERSUASION

PELTON WIDELoad 78B

PELTON MISS JAYLA 0508S | NEO-SHO DIRECT TICKET M517

BHR BANKER 142 | PELTONS MISS CORY 5037N

WSM MISS BANKER 440B

TNTS BANK STATEMENT T272

MISS BHR CHAPTER ONE 637

MESSMER ZINA S005 | BECKTON HASTEN P292

MESSMER ZINA 247P

PROS	HB	GM	CED	BW	WW	YW	ADG	DMI	M	ME
83	56	28	10	-0.6	63	97	0.22	1.57	27	-1
66%	48%	71%	86%	74%	42%	51%	60%	61%	41%	28%
HPG	CEM	STAY	MARB	YG	CW	REA	FAT			
11	5	16	0.54	0.02	9	0.1	0.02			
62%	86%	45%	24%	27%	92%	56%	58%			

A tough one to let go but someone will be investing a topnotch female that should go on to do great things. A fancy heifer with some power behind her and out of an outstanding dam. A maternal brother sells as Lot 7. Due to calve in May.



65 WSM 1016J

DOB: 03-01-2021 REG: 4468027

ACT BW: **68** ADJ WW: **565**

BIEBER ROLLIN DEEP Y118 | BIEBER ROOSEVELT W384

RREDS SENECA 731C

BIEBER TILLY 399W

RREDS ASTER 309A | BECKTON EPIC R397 K

MLK CRK ASTER 175

CRUMP FOREVER RED 324 | BIEBER H HUGHES W109

WSM FORGIVEN PRINCESS 602D

HAT RANCH AMBER 128

WSM FORGIVEN PRINCESS 408B

BROWN JYJ REDEMPTION Y1334

WSM PRINCESS 202Z

PROS	HB	GM	CED	BW	WW	YW	ADG	DMI	M	ME
105	86	19	16	-5.2	60	98	0.24	1.58	21	3
30%	5%	86%	12%	5%	54%	49%	41%	62%	86%	46%
HPG	CEM	STAY	MARB	YG	CW	REA	FAT			
12	10	19	0.22	0.14	24	0.16	0.05			
36%	9%	8%	92%	86%	47%	43%	96%			

A powerhouse Seneca daughter with some calving ease. Help yourself here as these Seneca females are tough to beat. Due to calve in May.

66 WSM 1114J

DOB: 03/10/21 REG: 4468173

ACT BW: 93 ADJ WW: 670

PIE STOCKMAN 4051 LSF SAGA 1040Y
 PIE QUARTERBACK 789 PIE LAKOTA 046
 PIE RUBY 520 PIE ONE OF A KIND 352
 BECKTON EPIC R397 K PIE RUBY 381
 WSM EPIC LIZ 316A BECKTON EPIC K F075
 MESSMER LIZZY M80 BECKTON KIT F468 JL
 BASIN HOBO 79E
 MESSMER LIZZY A951



PROS	HB	GM	CED	BW	WW	YW	ADG	DMI	M	ME
133	75	58	14	-2.8	67	114	0.3	1.64	31	9
5%	15%	15%	32%	32%	27%	16%	9%	68%	10%	81%
HPG	CEM	STAY	MARB	YG	CW	REA	FAT			
12	7	19	0.64	0.03	21	0.27	0.03			
37%	55%	6%	12%	30%	61%	22%	69%			

Here's a chance to own a direct Quarterback 789 daughter that is bigger framed and full of performance. She packs a punch when it comes to the length of body and her number profile is outstanding as well. Due to calve in May.

67 WSM 1073J

DOB: 03-05-2021 REG: 4468103

ACT BW: 82 ADJ WW: 636

RREDS SENECA 731C BIEBER ROLLIN DEEP Y118
 RREDS FUNDAMENTAL 8818 RREDS ASTER 309A
 BASIN PRIMROSE 4167 BASIN EXT H695
 BHR BANKER 142 BASIN PRIMROSE 879L
 WSM MISS BANKER 362A TNTS BANK STATEMENT T272
 WSM OLYMIPA 122Y MISS BHR CHAPTER ONE 637
 BROWN COMMITMENT S7206
 WASEM OLYMPIA 901W



PROS	HB	GM	CED	BW	WW	YW	ADG	DMI	M	ME
110	60	50	14	-2.1	70	112	0.26	1.86	23	11
23%	39%	26%	36%	44%	18%	20%	25%	86%	75%	90%
HPG	CEM	STAY	MARB	YG	CW	REA	FAT			
13	7	16	0.53	0.11	36	0.33	0.04			
19%	41%	35%	25%	74%	11%	14%	89%			

An easy fleshing kind of heifer that'll surely pass along to her progeny. Just an overall nice female. Due to calve in May.

68 WSM 1006J

DOB: 02-27-2021 REG: 4468015

ACT BW: 75 ADJ WW: 612

SLGN WIDELOAD 920W UBAR HIGH CAPACITY 224
 PELTON WIDELOAD 78B MEADO-WEST PERSUASION
 PELTON MISS JAYLA 0508S NEO-SHO DIRECT TICKET M517
 PELTONS MISS CORY 5037N



WSM 994G

WSM GINNIE 711E ANDRAS FUSION R236
 WSM MS GINNIE 569C

PROS	HB	GM	CED	BW	WW	YW	ADG	DMI	M	ME
82	33	49	12	-2.4	61	100	0.24	1.5	25	-4
68%	87%	28%	58%	39%	48%	45%	41%	54%	52%	17%
HPG	CEM	STAY	MARB	YG	CW	REA	FAT			
10	7	11	0.59	0.04	20	0.15	0.02			
80%	57%	90%	17%	38%	62%	46%	51%			

We are trying to figure out who her maternal grand sire is. If we haven't figured it out by sale time, she will sell as is and we will assist in getting things figured out. 1006J is a feminine easy fleshing type of heifer that is moderate in frame. Due to calve in May.



69 WSM 1002J

DOB: 02-21-2021 REG: 4468007

ACT BW: 83 ADJ WW: 644

RREDS SENECA 731C BIEBER ROLLIN DEEP Y118
 9 MILE STATESMAN 9215 RREDS ASTER 309A
 9 MILE STONY W914-6114 5L INDEPENDENCE 560-298Y
 RED BAR-E-L LOOKIN COOL 164D C-BAR STONY W914
 WSM RACHEL 814F RED BAR-E-L BOOSTER 147B
 WSM 348A BAR-E-L OROCUS 165W
 BHR BANKER 142
 WSM RACHEL 118Y

PROS	HB	GM	CED	BW	WW	YW	ADG	DMI	M	ME
105	74	31	10	-0.2	65	99	0.21	1.55	24	3
30%	15%	65%	80%	80%	34%	47%	62%	59%	67%	49%
HPG	CEM	STAY	MARB	YG	CW	REA	FAT			
13	6	18	0.38	0.09	28	0.13	0.02			
26%	70%	15%	58%	66%	32%	49%	60%			

Dark red and wide bodied, which is what we would expect from Statesman 9215. This is the first set of daughters we are going to calve this spring. Due to calve in May.



70 WSM 1075J

DOB: 03-05-2021 REG: 4468107

ACT BW: 77 ADJ WW: 608

BIEBER ROLLIN DEEP Y118 BIEBER ROOSEVELT W384
 BIEBER TILLY 399W
 RREDS SENECA 731C BECKTON EPIC R397 K
 RREDS ASTER 309A MLK CRK ASTER 175
 BROWN COMMITMENT S7206 LJC LANCER 806
 WSM DORSEY 103Y BROWN MS SHAZZAM P7940
 WASEM DORSEY 903W COLEY'S MOJITO 503R
 MESSMER DORSEY 038P

PROS	HB	GM	CED	BW	WW	YW	ADG	DMI	M	ME
106	74	32	11	-1.5	71	115	0.27	1.71	19	4
29%	16%	63%	79%	57%	14%	15%	20%	74%	94%	52%
HPG	CEM	STAY	MARB	YG	CW	REA	FAT			
10	5	19	0.42	0.16	25	0.08	0.05			
70%	82%	7%	48%	92%	42%	61%	95%			

Another Seneca daughter that looks the part and has growth numbers in the top of the breed. Broody looking gal for sure. Due to calve in May.



71 WSM 1124J

DOB: 03-14-2021 REG: 4468185

ACT BW: 75 ADJ WW: 604

BROWN UNRIVALED A7552 HUST CHIEF SEQUOYA R336
 BROWN MS P707 X7580
 LSF SRR UNMATCHED 8273F LSF FROSTY 1120Y
 LSF SRR CRYSTAL X0415 A3174 LSF CRYSTAL R5145 X0415
 C-BAR EL GRANDE 100C C-BAR ELDORADO 114Z
 WSM 980G C-BROWN&KM ABIGRACE T715
 RUST MISS 309A C-T DKK DUKE 1100
 C-BAR SIERA Y27

PROS	HB	GM	CED	BW	WW	YW	ADG	DMI	M	ME
55	40	15	10	-1.3	62	101	0.24	1.87	25	4
95%	78%	90%	84%	60%	43%	42%	41%	86%	57%	54%
HPG	CEM	STAY	MARB	YG	CW	REA	FAT			
12	6	13	0.41	-0.01	6	0.25	0.03			
45%	80%	72%	50%	16%	96%	26%	79%			

A moderate framed heifer that has a balanced set of numbers. Due to calve in May.

72 WSM 1137J

DOB: 03-23-2021 REG: 4468203

ACT BW: 70 ADJ WW: 662

BROWN UNRIVALED A7552 HUST CHIEF SEQUOYA R336
 LSF SRR UNMATCHED 8273F BROWN MS P707 X7580
 LSF SRR CRYSTAL X0415 A3174 LSF FROSTY 1120Y
 L83 BLUES 149C LSF CRYSTAL R5145 X0415
 SIX MILE VARSITY BLUES 14Z
 WSM 992G L83 MISS BRONTE 22A
 WSM FORGIVEN PRINCESS 602D CRUMP FOREVER RED 324
 WSM FORGIVEN PRINCESS 408B



PROS	HB	GM	CED	BW	WW	YW	ADG	DMI	M	ME
80	71	9	15	-4.3	58	92	0.21	1.81	28	1
70%	20%	95%	23%	12%	59%	63%	66%	82%	24%	37%
HPG	CEM	STAY	MARB	YG	CW	REA	FAT			
12	8	17	0.45	0.12	5	-0.04	0.05			
42%	27%	27%	41%	77%	96%	86%	94%			

Another moderate framed Unmatched daughter that should do a good job with her first calf. Due to calve late April.

73 WSM 1148J

DOB: 03-26-2021 REG: 4468213

ACT BW: 78 ADJ WW: 626

WSM EPIC 329A BECKTON EPIC R397 K BECKTON EPIC K F075
 BECKTON KIT F468 JL
 EURA VANNA 802 OHRR 142 MR RED HAWK 204S
 OHRR 47N COPPER VANNA 12S
 RED BAR-E-L CITIZEN 127C RED U-2 JUSTIFIED 235Z
 WSM GINNIE 832F RED WRAZ CHER 21Y
 801U WSM BIEBER XCEPTION 10083
 MESSMER GINNIE 233N



PROS	HB	GM	CED	BW	WW	YW	ADG	DMI	M	ME
81	53	28	10	-0.3	62	97	0.22	1.2	20	3
69%	53%	70%	82%	79%	43%	50%	57%	27%	92%	49%
HPG	CEM	STAY	MARB	YG	CW	REA	FAT			
11	8	15	0.33	0.04	19	0.2	0.03			
59%	37%	60%	70%	36%	69%	34%	67%			

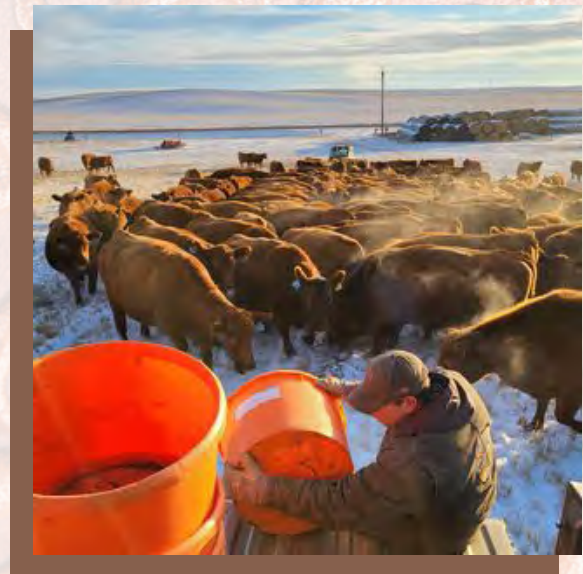
One of the last Epic 329A daughters we will sell. Longevity is built into this pedigree with Epic 329A and the 801U cow, coming with her 13th calf this spring. Due to calve in May.

74 WSM 1125J

DOB: 03-16-2021 REG: 4468187

ACT BW: 77 ADJ WW: 577

9 MILE STATESMAN 9215 RREDS SENECA 731C BIEBER ROLLIN DEEP Y118
 RREDS ASTER 309A
 9 MILE STONY W914-6114 5L INDEPENDENCE 560-298Y
 C-BAR STONY W914
 BECKTON EPIC R397 K BECKTON EPIC K F075
 WSM MISS PRINCESS 632D BECKTON KIT F468 JL
 MISS WSM PRINCESS 102Y 5L NORSEMAN KING 2291
 MISS BHR PRINCESS 308



PROS	HB	GM	CED	BW	WW	YW	ADG	DMI	M	ME
99	63	36	13	-2.5	55	91	0.22	1.38	23	5
39%	33%	54%	49%	37%	70%	64%	54%	42%	75%	62%
HPG	CEM	STAY	MARB	YG	CW	REA	FAT			
13	7	17	0.4	0.13	23	0.09	0.04			
25%	48%	31%	53%	85%	53%	60%	91%			

A long made heifer with some style. Due to calve in May.

30 WASEM COMMERCIAL HEIFERS

75 Once again we have a top-notch set of commercial open heifers up for grabs. These heifers come from our commercial herd and will have the bottom end cut out and will only be offering the very uniform front end. Over the last few years we have not retained any commercial replacements in our herd. So, you are getting the very best we have to offer on the commercial side. They were weaned late October, are current on all vaccinations and have had their first round of preg-guard 10. When weaned, they were started on a high energy ration for two weeks and then backed off to a 38 mg cal balanced ration, which they are currently on. Prior to sale they will all be pregnancy tested open and breedable.



WATCH VIDEOS ONLINE
WASEMREDANGUS.COM

DVAuction
Broadcasting Real-Time Auctions

40 TEBELIUS COMMERCIAL HEIFERS

76 We are offering this select group of replacement heifers as we feel that will make great momma cows in any herd. The heifers are age advantaged as we start calving the first part of Feb and are done the end of March. Many of these heifers will be yearling at the time of the sale. We have been purchasing bulls from Wasems for several years and many of these heifers are out of Wasem Red Angus genetics.

We have been using Red Navigator and Neogen Igenity Beef for DNA testing on our heifer calves for over 10 years. The results are based on all Red Angus cattle in the database and these heifers ranked in the top 45% in 12 of the 15 categories, for all cattle tested. They were in the top 30% in weaning and yearling categories and should pass these growth traits to their progeny. A semi-load of steer calf mates of theirs shipped the 1st week of Nov with an average weight of 870lbs. The remaining steers shipped the 2nd week of Dec with the light bunch averaging 790 and the heavy bunch at 880lbs. All calves were weaned on Sep 18th and fed in our yard. Our average herd birth weight this year was 87lbs on the heifers and 92lbs on the steer calves.

These heifers have received Bovishield Gold FP5+VL5. They are on a 42mg TMR ration to gain 1.8lbs per day and a Purina mineral package. They are being fed in a 20-acre pasture around our yard where they can develop their feet and get plenty of exercise. The heifers were bangs vaccinated and guaranteed open and breedable by the Steele Vet Clinic.

We will feed the heifers until the 3rd week in March at no additional cost. At that time we will work with the buyer on arrangements for the heifers to be picked up. The heifers should average 900 lbs at the time of delivery and can be viewed at our ranch. If you have any questions or would like to come and take a look give us a call: Jon 701-341-1916 or Patty 701-260-0095.





CHRIS & JOLYN WASEM
KACEE & BRAELYN

249 91ST AVE. SW
HALLIDAY, ND 58636
(701) 260-1513

WWW.WASEMREDANGUS.COM

